



COSTAFIORE GARDENS

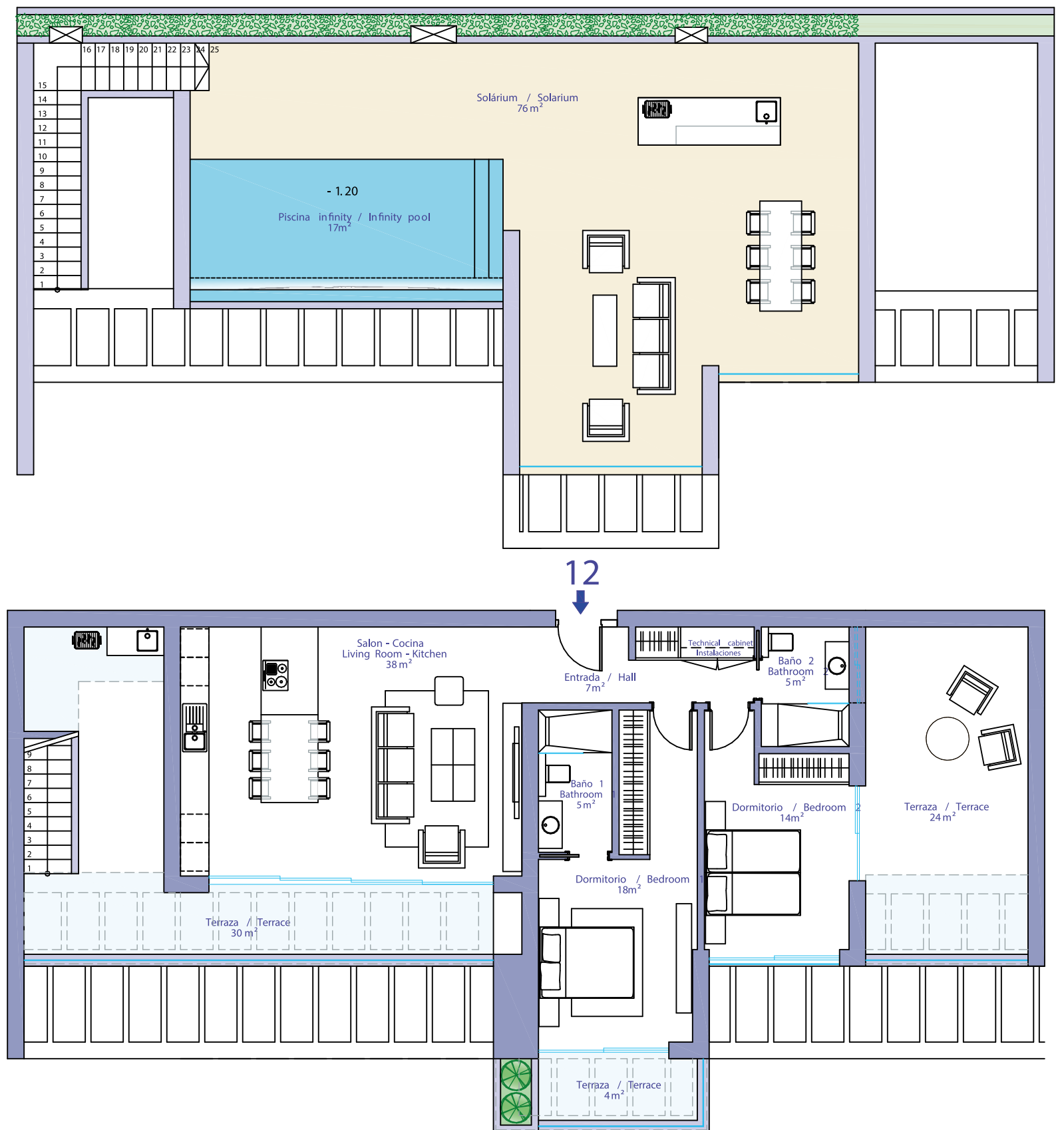
WHERE QUALITY MEETS COMFORT

PENTHOUSE 12



SURFACE AREAS

USEFUL AREA	94,08 m2
BUILT	150,20 m2
terraces	58 m2
solarium	76 m2
pool	17 m2





Features

- 2 bedrooms • 2 bathrooms • kitchen
- livingroom • terrace 58 m2 • barbecue
- 2 parking places • 1 storage • pool 17 m2
- solarium 76 m2



THE KITCHEN

The kitchen cabinets have a glossy white finish and the doors and drawers of the cabinets are equipped with a soft-closing system designed by INKO. INKO, as a leading manufacturer of kitchens in Spain, produces high quality kitchen systems with a durable and long life span.

All appliances are integrated and consist of a multifunctional oven, microwave, dishwasher and a combined fridge-freezer. The induction hob has an integrated extractor fan and therefore there is no large extractor fan in the ceiling necessary taking up space in your kitchen, all from the brand Neff.



LIVING ROOM

At Costafore Gardens, we chose Technal for its ability to create an exclusive four-sliding-door system with a 75% opening on both sides, achieving a seamless connection between indoors and outdoors. The Soleal frames, with their minimalist design and elegant lines, feature concealed hardware, lending perfection, cleanliness, and elegance to the whole.



BEDROOMS

There is plenty of storage space in the penthouses due to the built-in cupboards. The natural light in the penthouses is guaranteed by the amount and height of the windows and sliding doors.



SANITARY EQUIPMENT

Porcelanosa Grupo chosen as the supplier of ceramic tiles and sanitary ware in Costafore Gardens. Porcelanosa Grupo is a leading Spanish business group specialising in the production and sale of ceramic and natural floor and wall tiles, wall cladding, sanitary ware, taps, bathroom accessories and installation, environmental and sustainability solutions.

All bathrooms have a hanging bathroom cabinet with a glossy white finish. The bathroom furniture is equipped with a manual self-closing drawer. A sleek, simple but sophisticated design. The tap is round and has a chrome finish. The countertop is of solid plastic of the brand Urban by Porcelanosa and has an integrated sink.



TERRACES

Penthouses offer sea views on the south side and views of the beautiful mountains on the north side. The penthouses have three terraces and a rooftop solarium with an exclusive private pool. The terraces vary in total usable area from 58 m² to 84 m².



INFINITY POOL AND BBQ

