

FINCA de J A S M I N E



FINCA
de
J A S M I N E

*A unique development offering panoramic sea views, tranquility, privacy
but close to everything the Coast has to offer.*



Benahavís Marbella municipality is a huge 145 km² of dramatic mountains, forests and countryside home to some of the most expensive villas in the world and the luxury enclaves of La Zagaleta and El Madroñal.

Finca de Jasmine is located in the lower slopes on the border of Marbella with amazing sea views only 5 minutes to the blue flagged beaches of the Costa del Sol.

JASMINE





O R G A N I C A R C H I T E C T U R E C O N C E P T



Finca de Jasmine is a gated and secure community of villas with club house, spa and gym with verdant Mediterranean gardens and amazing panoramic sea views.



Club House facilities. →



...IN THE BEAUTIFUL GOLDEN TRIANGLE AREA OF BENAHAVÍS, MARBELLA AND ESTEPONA

Finca de Jasmine is located in the beautiful 'Golden Triangle' area of Benahavis, Marbella and Estepona, home to five star hotels and five star golf courses.

The traditional whitewashed spanish pueblo of Benahavís is a lovely 10 minutes drive through the gorge and is packed with restaurants, bars, galleries and of course the facilities of small town such as post office, banks, schools and public / private sports.

Just 7 minutes to Puerto Banús, 15 minutes travelling East to Marbella and 20 minutes travelling West to Estepona the location offers easy access to some of the Costa del Sol's most popular destinations.

Benahavis is also the richest municipality in Andalucía and this ensures that the area is beautifully maintained and why it's a very popular destination for permanent living and second home owners.

A P R I V I L E G E D L O C A T I O N



■ A HAVEN OF NATURAL BEAUTY

Nature lovers will feel right at home here as there are many nature trails to explore, a large reservoir used by many species of wildlife and the perfect place to sit and watch the world go by. There are few places on the Costa del Sol that enjoy such uninterrupted views of the surrounding mountains, woodlands and rivers.



↑ *Situated next to the best golf courses on the Costa del Sol.*



FIND THE PERFECT VILLA FOR YOU

THE VILLAS

MODERN STYLISH INTERIORS
WITH A VARIATION OF KITCHEN
CONFIGURATIONS ALLOWS A
PERSONALISED LIVING AREA.

Finca de Jasmine is a gated and secure community of luxury villas with clubhouse and spa, covering a total of 269,000 m2.

Modern and contemporary properties with organic and natural elements in keeping with the surroundings. Verdant Mediterranean gardens and private pool with easy access to Marbella and Estepona within minutes makes this luxury residential project one of the most exciting in many years.

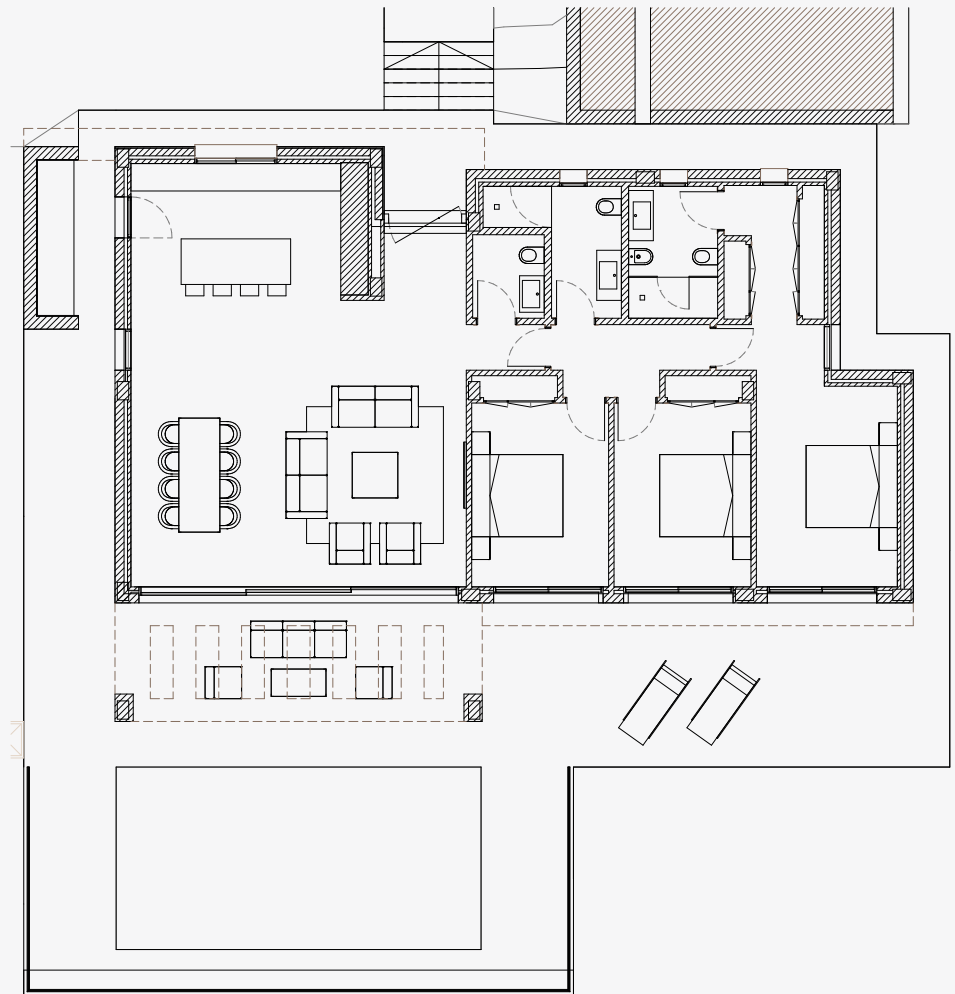


PERSONALIZED LIVING AREA



■ VILLA ROMERO - 3 BEDROOMS

3 bedrooms and 3 bathrooms all on one level. The ground floor also contains a large open plan living space that includes a fully fitted kitchen, salon and dining room. The special feature of the Romero is the extra high ceilings and windows that allows the light to flood in the home.



VILLA ROMERO
GROUND FLOOR



L A R G E O P E N P L A N L I V I N G S P A C E

GALLERY

■ ROMERO







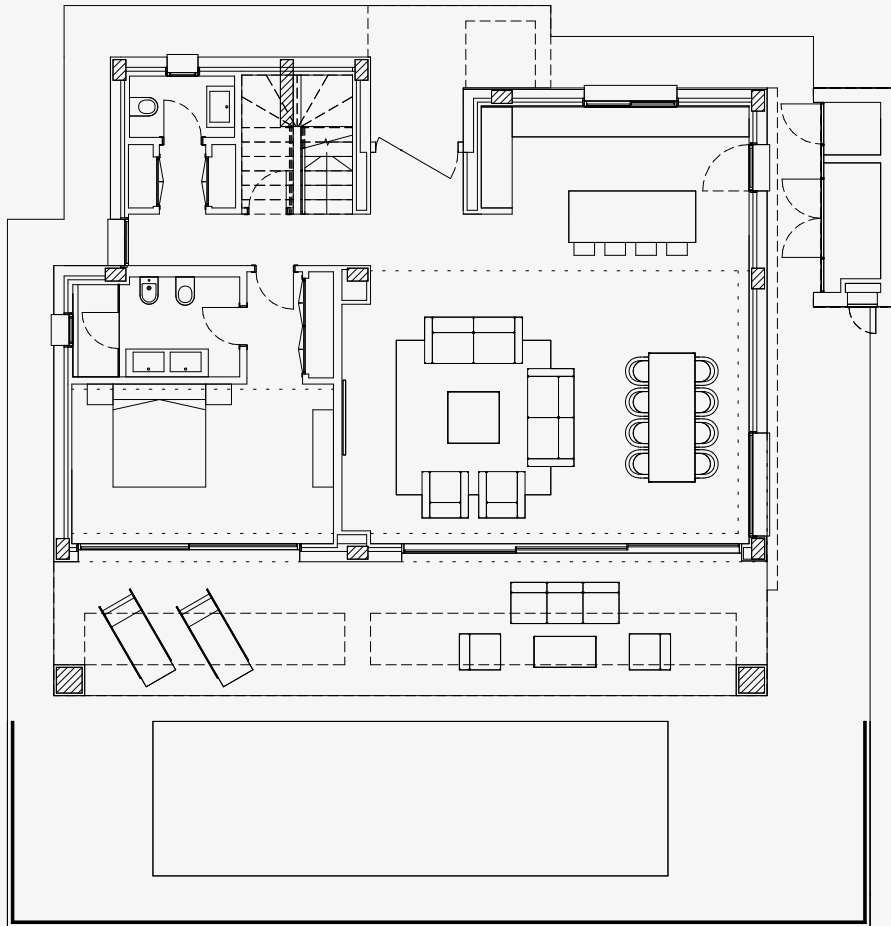
■ VILLA LAUREL | 4 BEDROOMS

4 bedrooms and 4 bathrooms spread over two levels. The ground floor contains a large open plan living space that includes a fully fitted kitchen, salon and dining room, as well as the master bedroom with en suite and a further guest bathroom. The first floor contains 3 guest bedrooms and 2 guest bathrooms with the versatility to create the master suite upstairs.

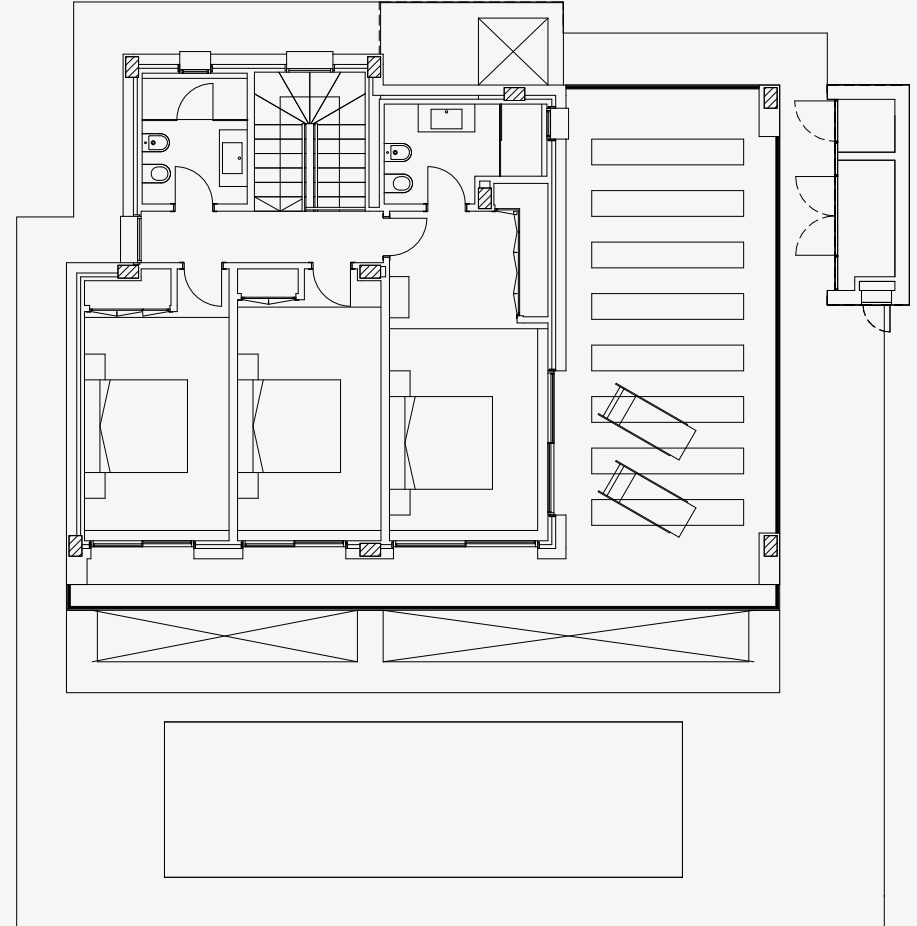
■ VILLA LAUREL S | 4 BEDROOMS + BASEMENT

Luxurious two-story villa with four bedrooms, situated on large 1000 m² plots. The villa offers South-facing views and a light-filled open plan living area incorporating a fully fitted kitchen, living and dining areas with direct access to a large terrace and private pool.

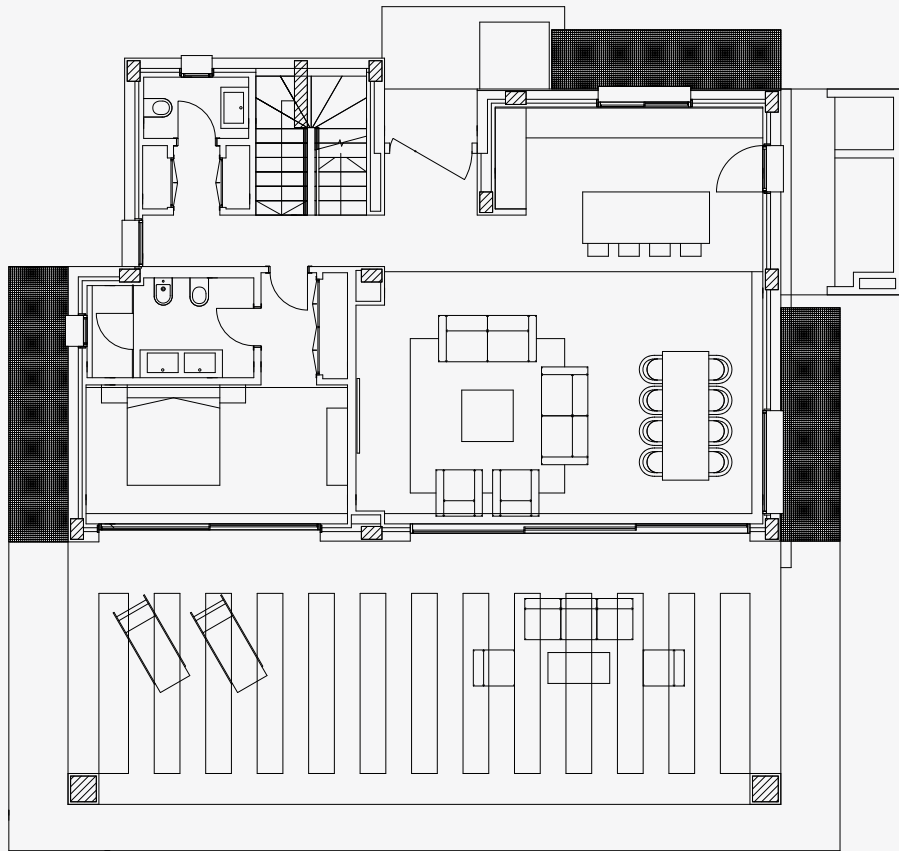
Upstairs features three bedrooms and two bathrooms with a private terrace off the master suite. The basement offers flexible accommodation for possible multiuse rooms, such as a cinema room, laundry room and store room.



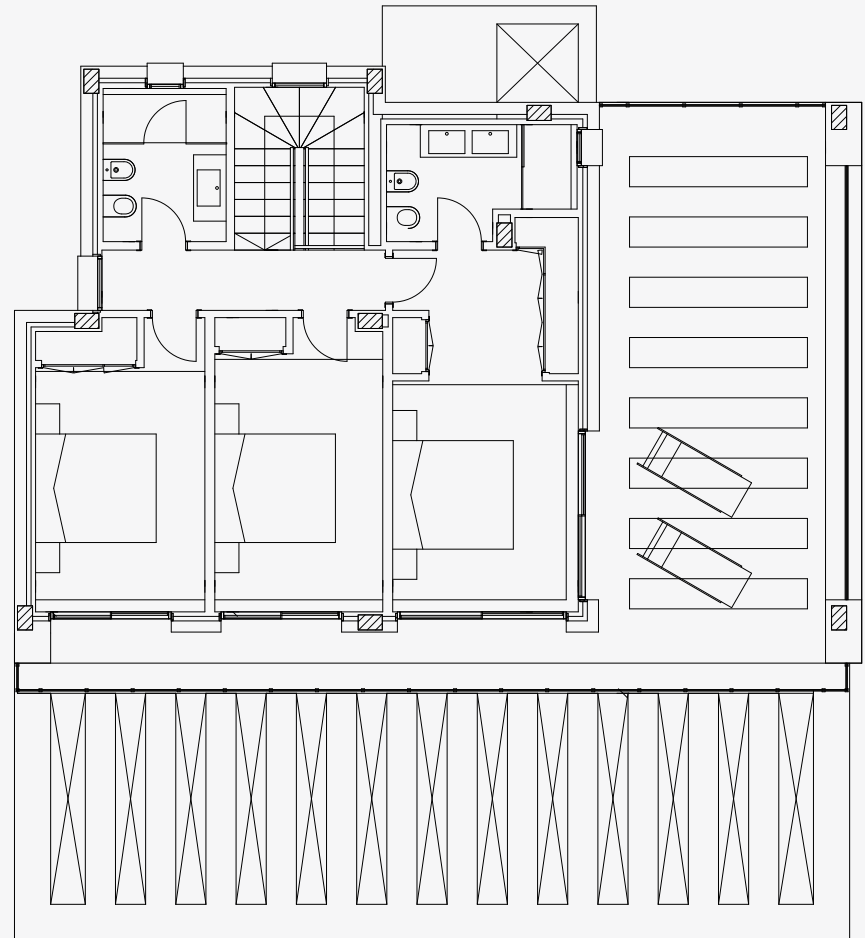
VILLA LAUREL
GROUND FLOOR



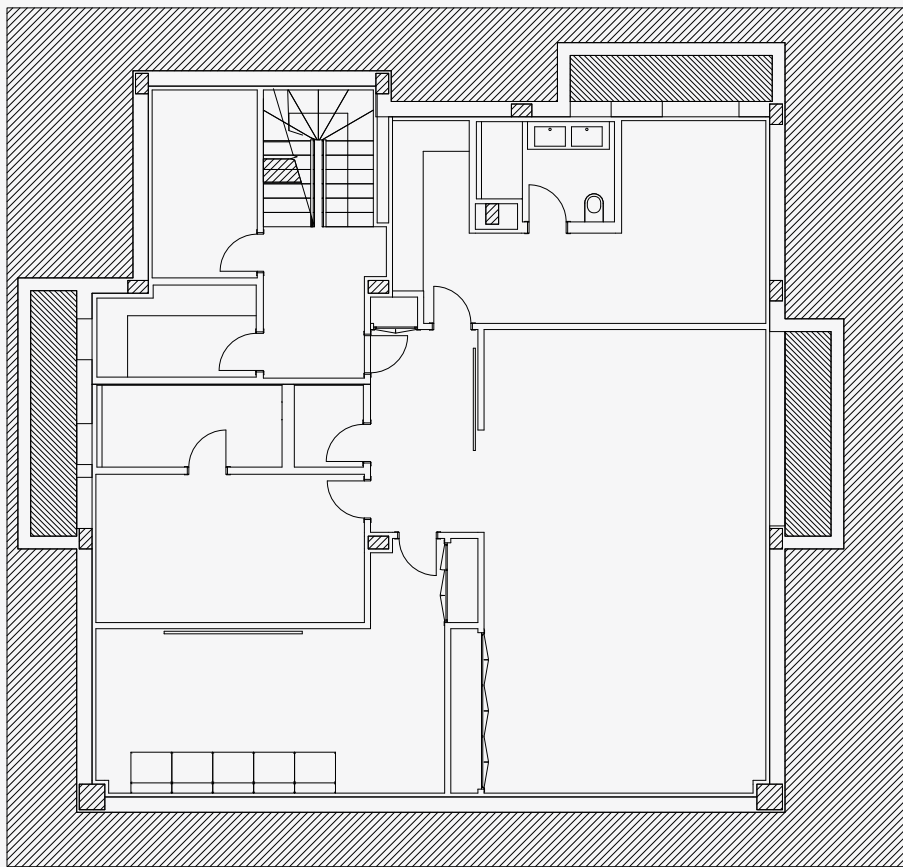
VILLA LAUREL
FIRST FLOOR



VILLA LAUREL S
GROUND FLOOR



VILLA LAUREL S
FIRST FLOOR



VILLA LAUREL S
BASEMENT



GALLERY

■ LAUREL & LAUREL S

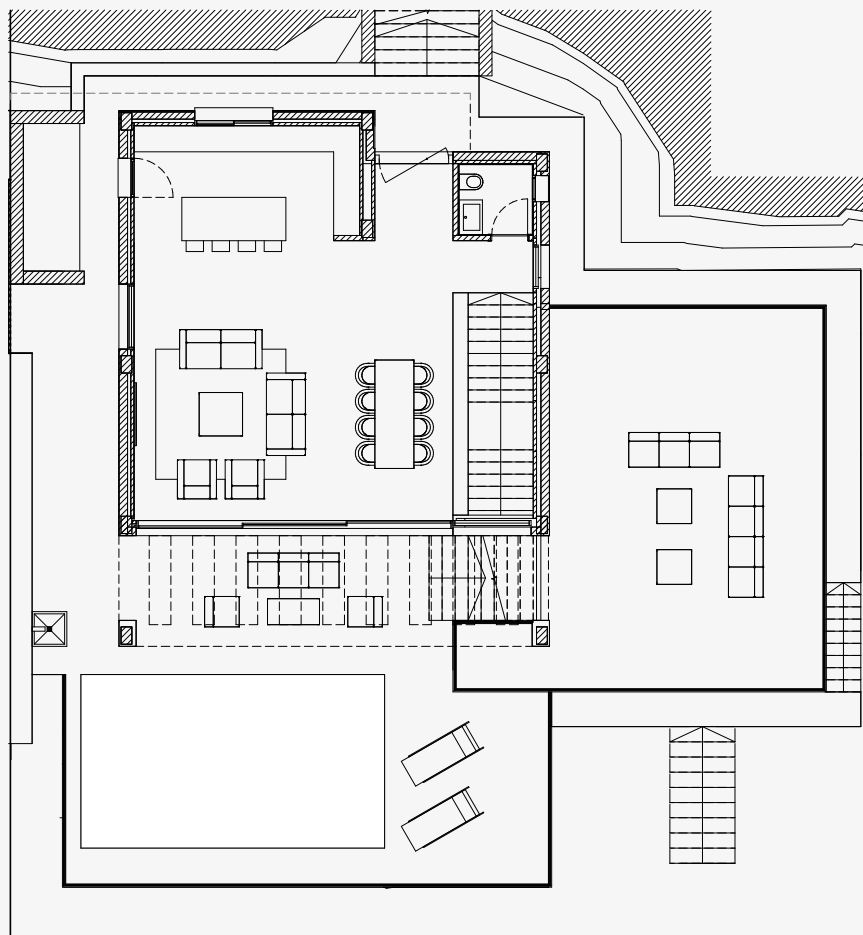




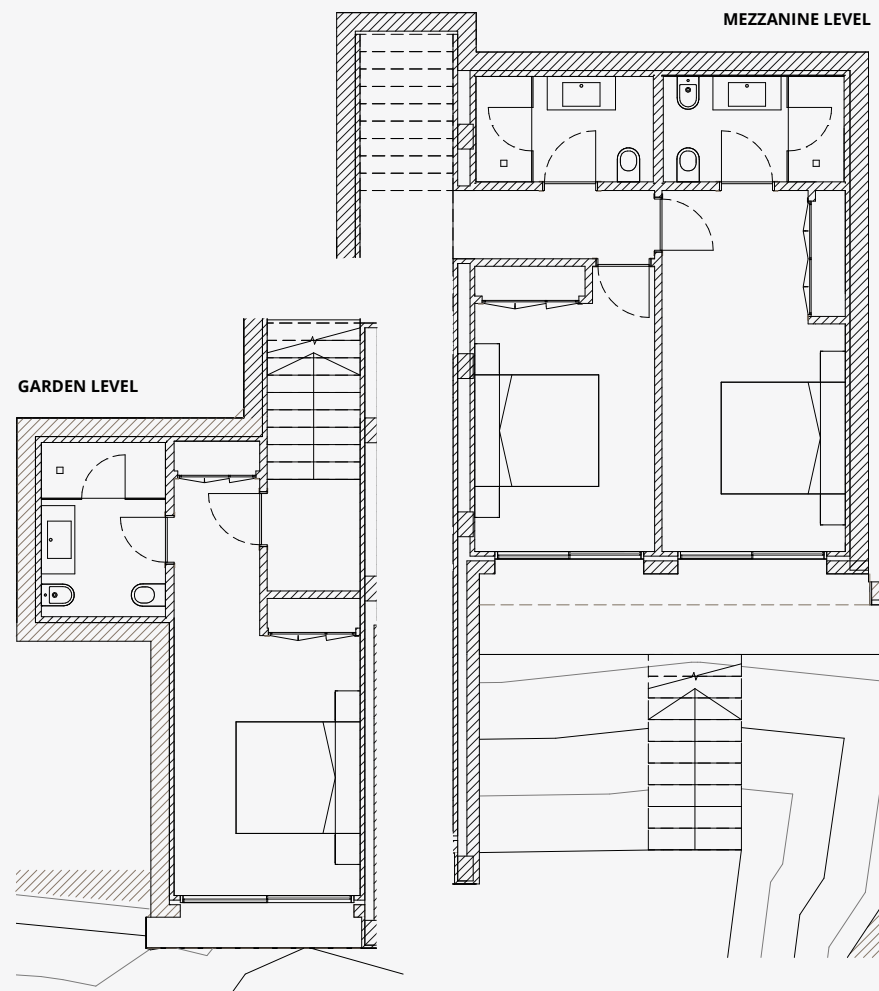


■ VILLA TOMILLO - 3 BEDROOMS

3 bedrooms and 3 bathrooms spread over three levels. On entering the villa you encounter a large open plan living space that includes a fully fitted kitchen, salon, dining room and guest WC. From there the stairs will lead you to the mezzanine level containing two guest bedrooms each with their own bathroom. The master suite is located on the garden level with an ensuite bathroom and access to your private landscaped garden. The unique feature of the Tomillo is the dual aspect terraces which allow you to follow the sun and change your stunning views as you wish another special feature of the Tomillo is the extra high ceilings and windows that allows the light to flood in the home.



VILLA TOMILLO
GROUND FLOOR



VILLA TOMILLO
GARDEN + MEZZANINE

GALLERY

■ TOMILLO



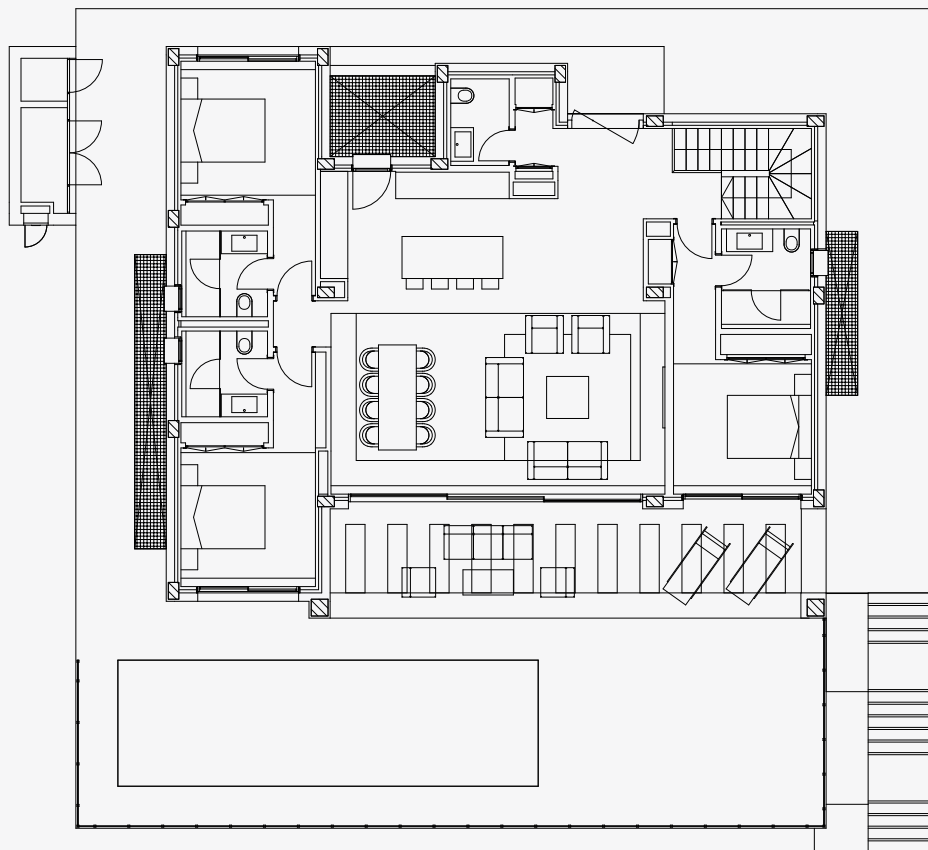




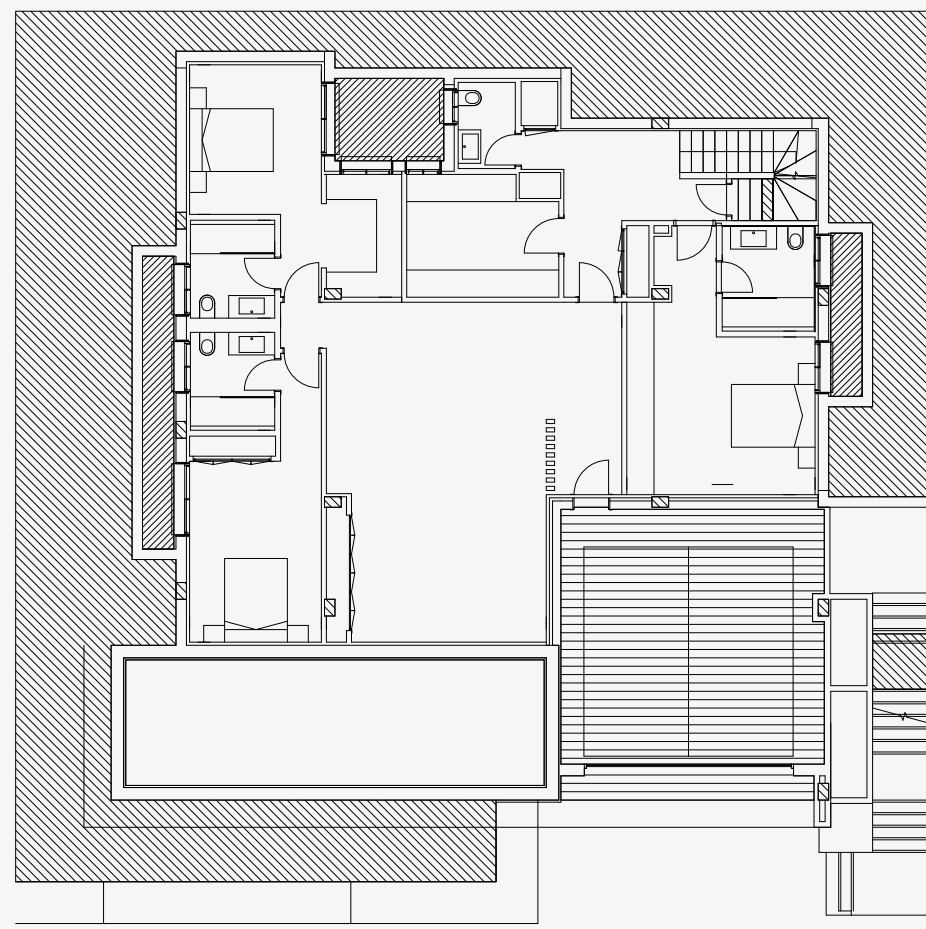
■ VILLA LAVANDA - 3 BEDROOMS + BASEMENT

Offering panoramic South facing views this villa design is generously proportioned. Offering 3.8 metre high ceilings in the open plan living space including living, dining and kitchen which leads seamlessly to the outdoor private pool and landscaped gardens. Off the living space are 3 bedroom suites, 2 of which with access to the private pool and gardens.

From the ground floor enter the generously sized basement which offers natural light, flexible accommodation including WC, laundry room and multiuse large space. The basement level also features access to the double garage that is entered externally via the electric doors.



VILLA LAVANDA
GROUND FLOOR



VILLA LAVANDA
BASEMENT FLOOR

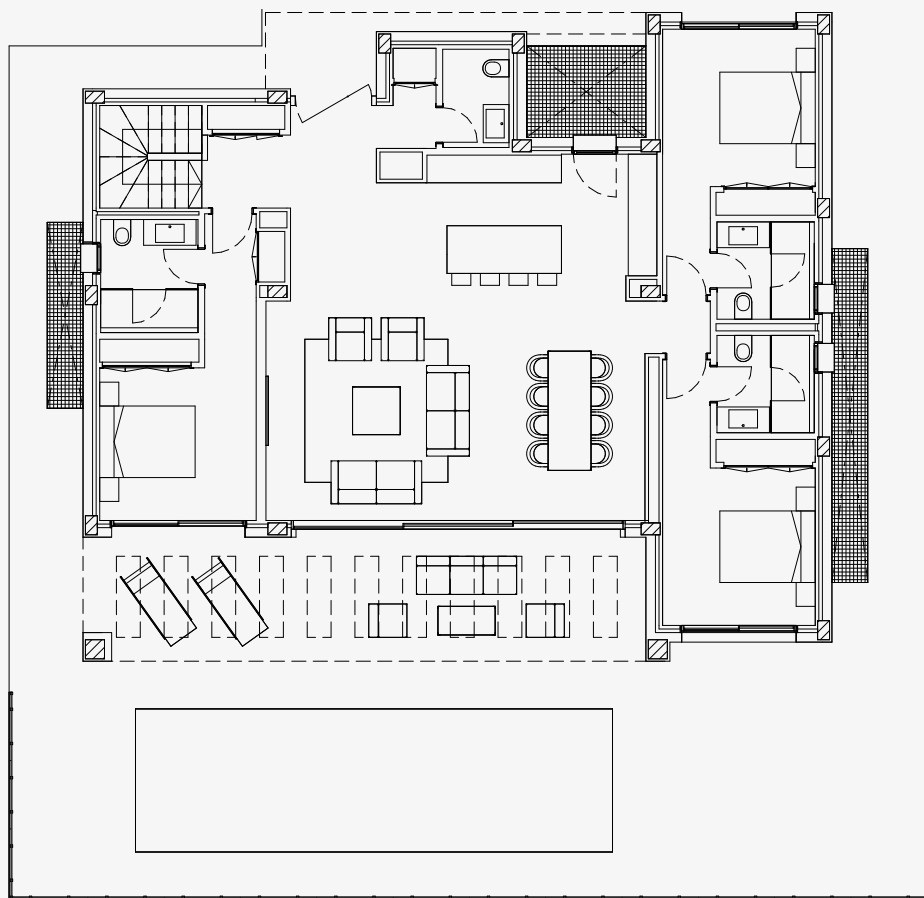


■ VILLA LAVANDA. B - 3 BEDROOMS + BASEMENT

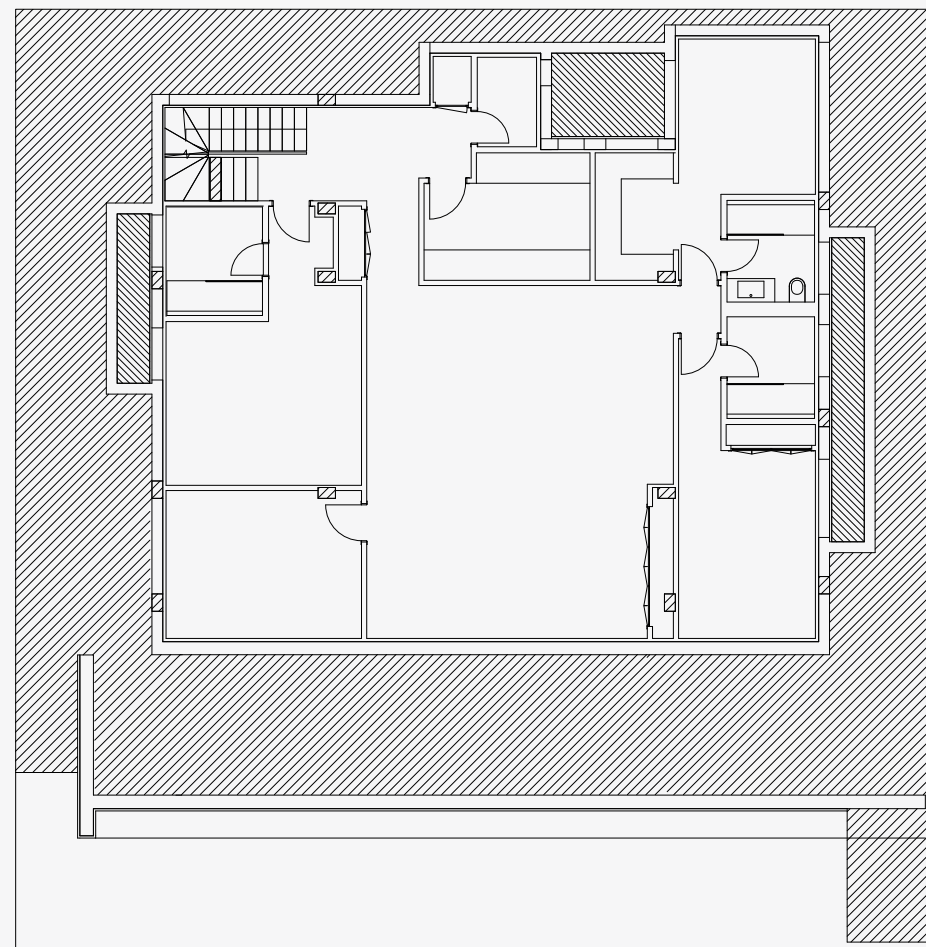
Featuring 3.8 metre high ceilings, a wall of glass floods the ground floor open plan living space and enhances the panoramic views offered. Featuring an open living, dining and kitchen this area flows seamlessly to the outdoor terrace and private pool.

Flowing off the main living space are 3 generous bedroom suites, 2 of which access the landscaped gardens and private pool.

From the ground floor enter the generously sized basement featuring natural light and offering a further WC, laundry room and flexible accommodation.



VILLA LAVANDA-B
GROUND FLOOR



VILLA LAVANDA-B
BASEMENT

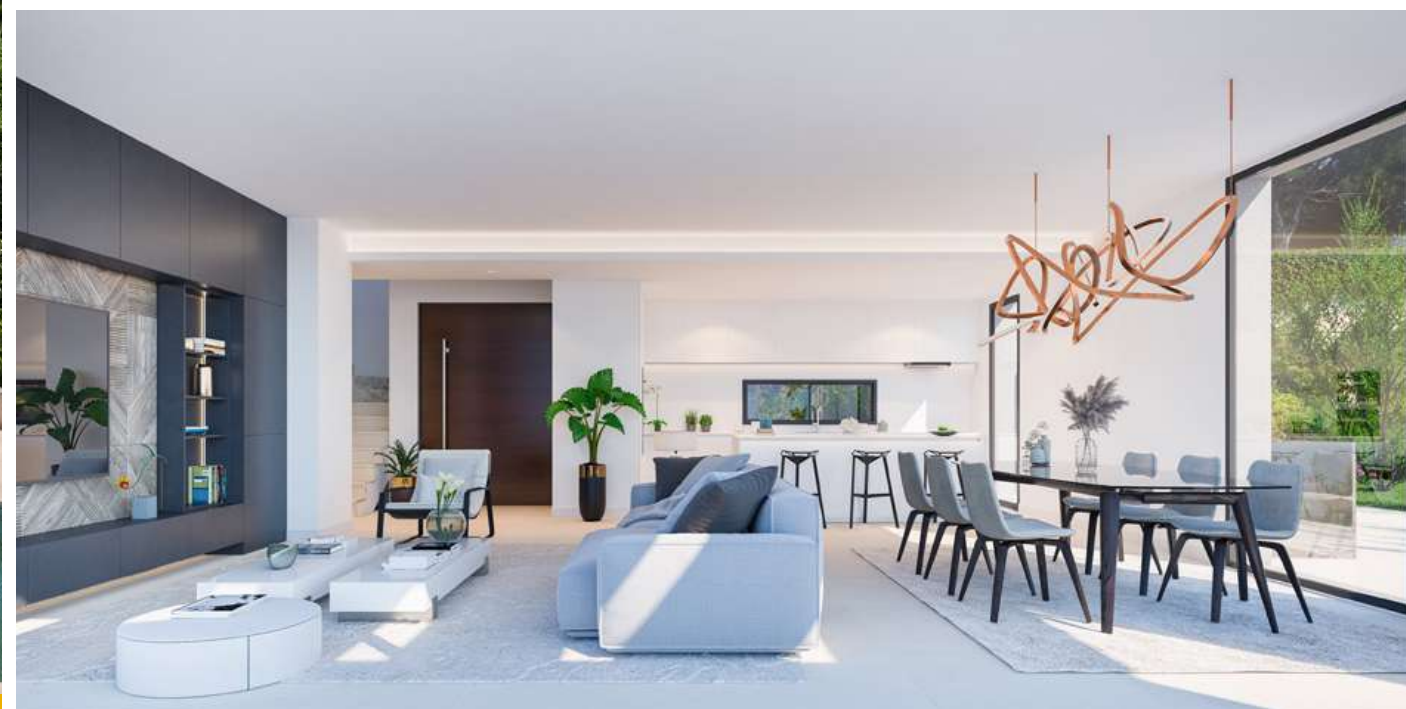


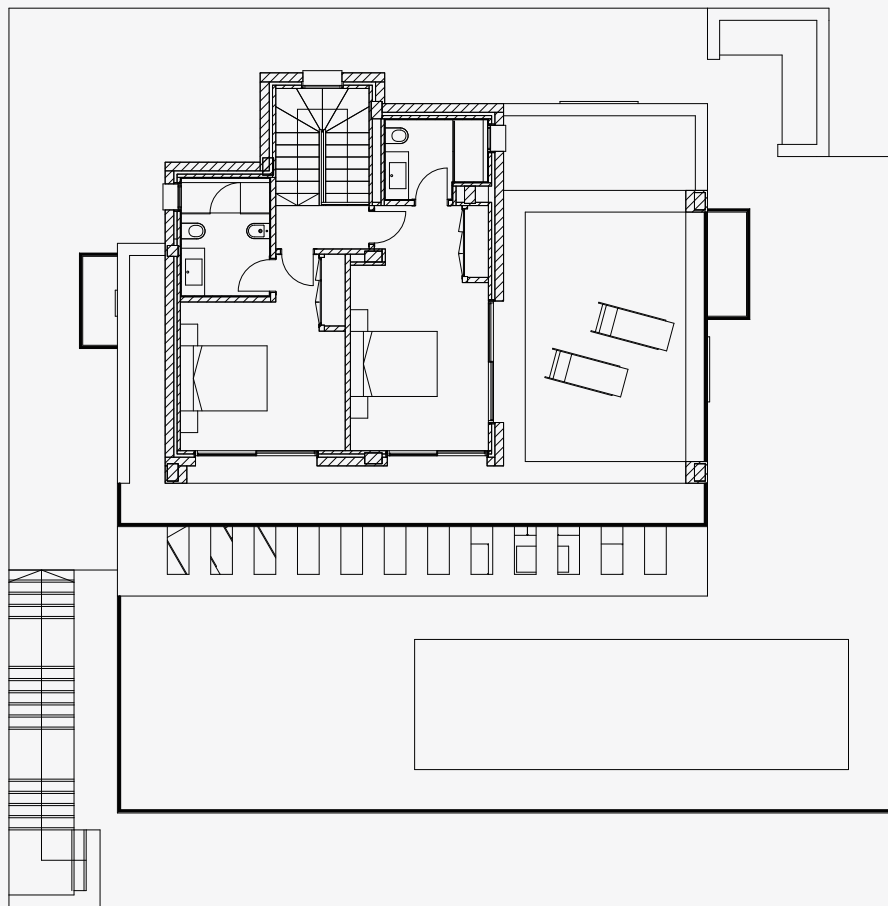
■ VILLA ENELDO - 3 BEDROOMS + BASEMENT

A generous home, offering seamless living, distributed over 3 floors.

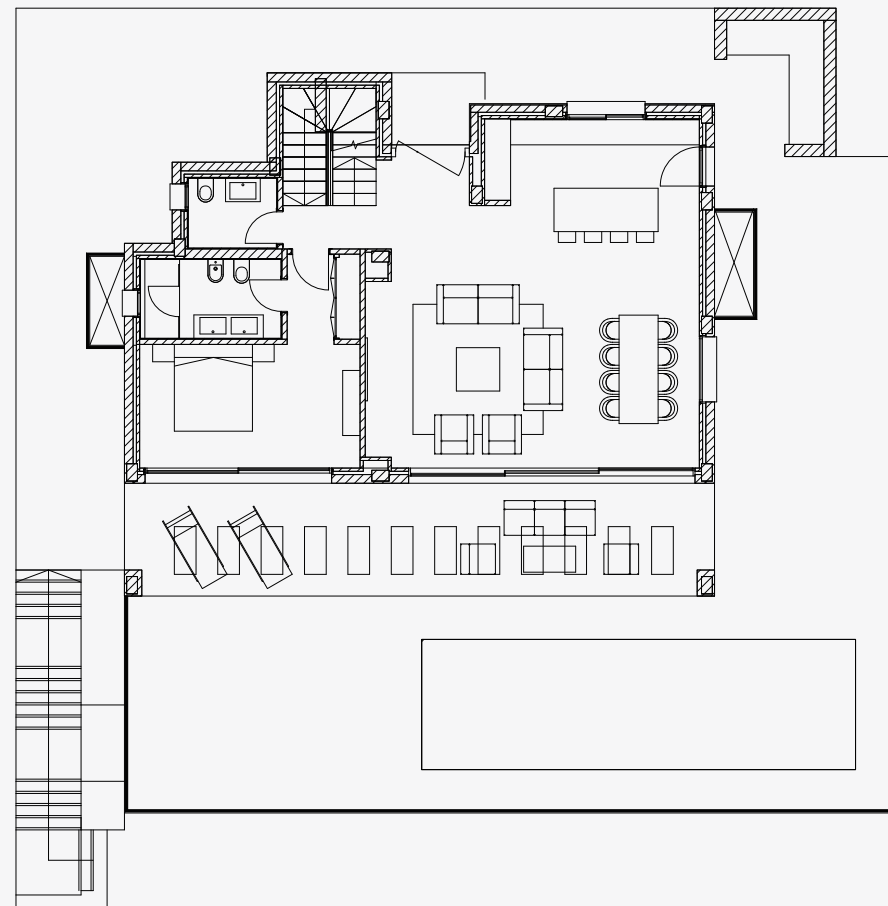
Entering the villa into a large open plan space incorporating living, dining and kitchen this flows seamlessly to the outdoor terrace and private pool. Also featuring a bedroom suite on the ground floor before heading upstairs to 2 bedroom suites, flooded with light that lead to a large private sun terrace.

The generous sized basement, featuring natural light and offers multi use flexible space, laundry room and WC.

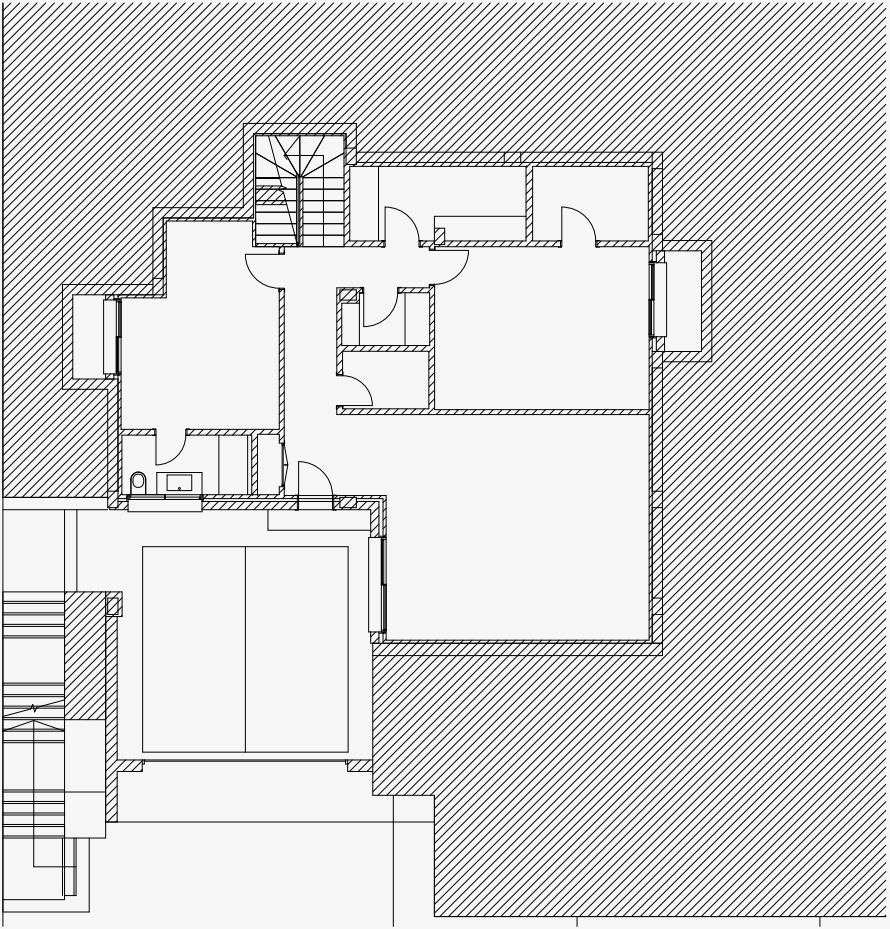




VILLA ENELDO
FIRST FLOOR



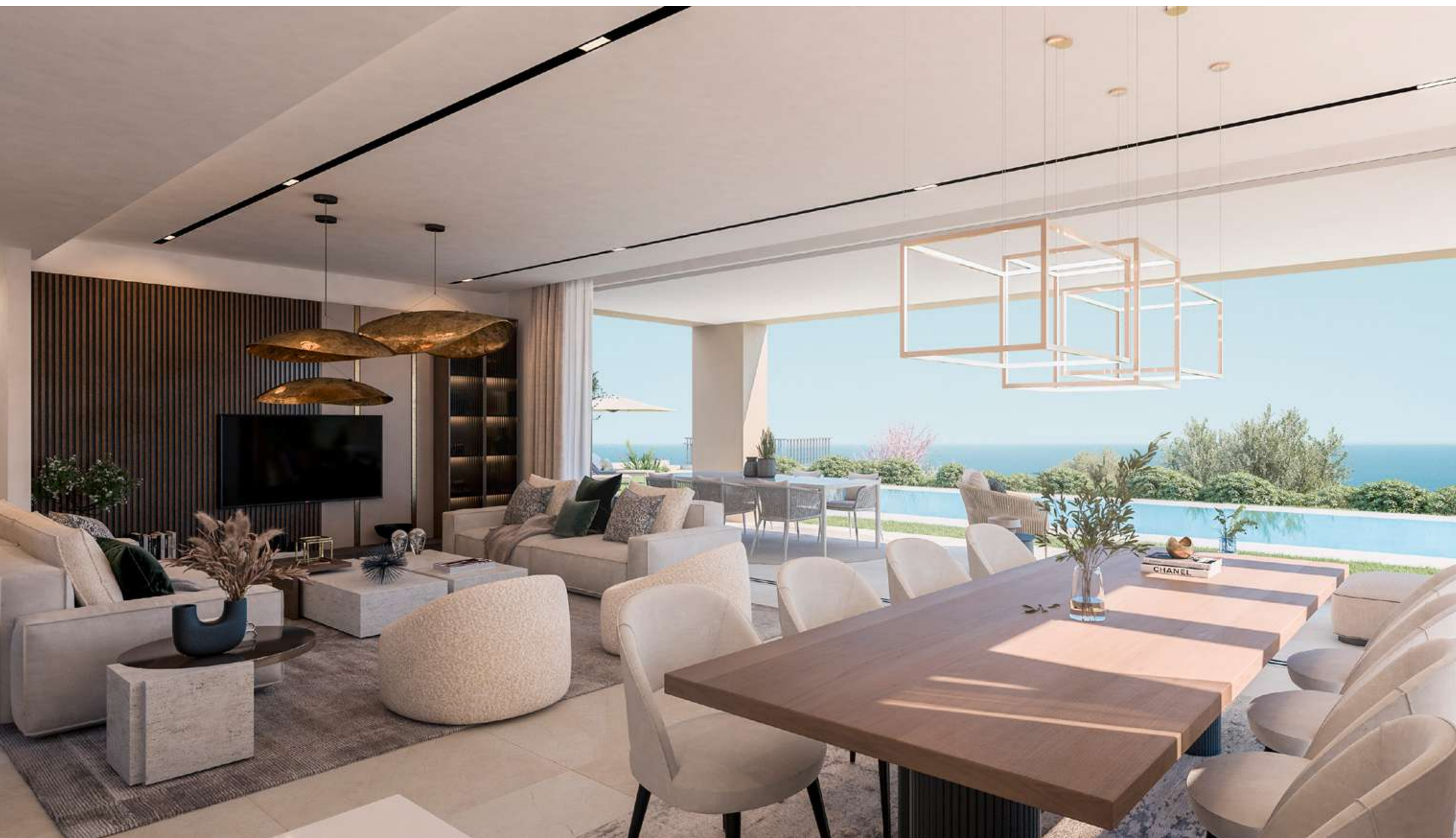
VILLA ENELDO
GROUND FLOOR



VILLA ENELDO
BASEMENT

J A S M I N E



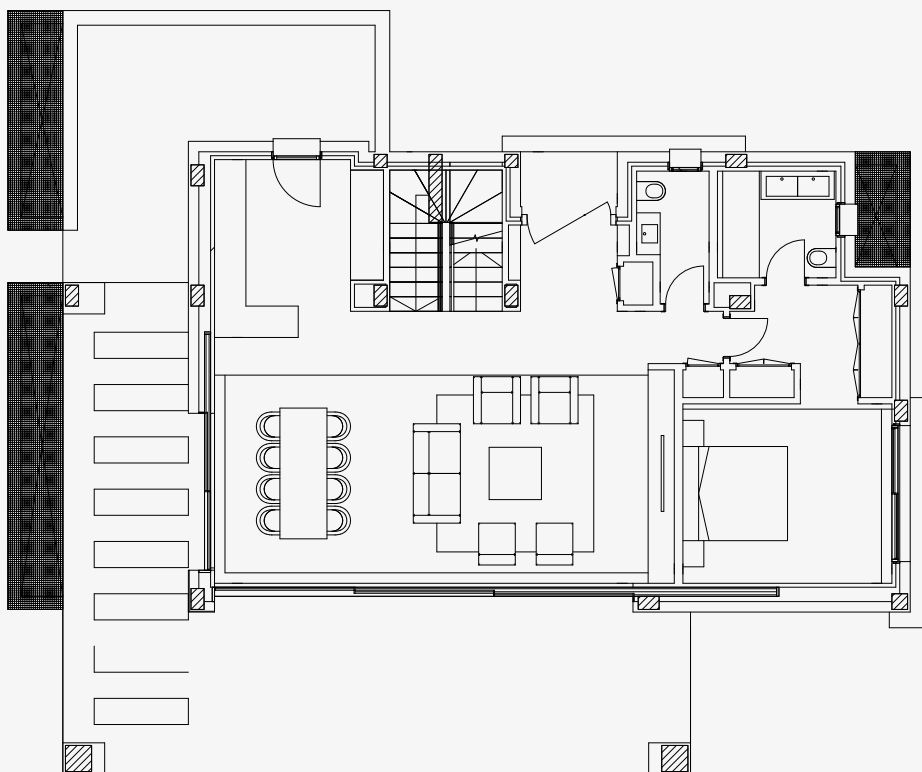


■ VILLA AZAFRAN - 4 BEDROOMS + BASEMENT

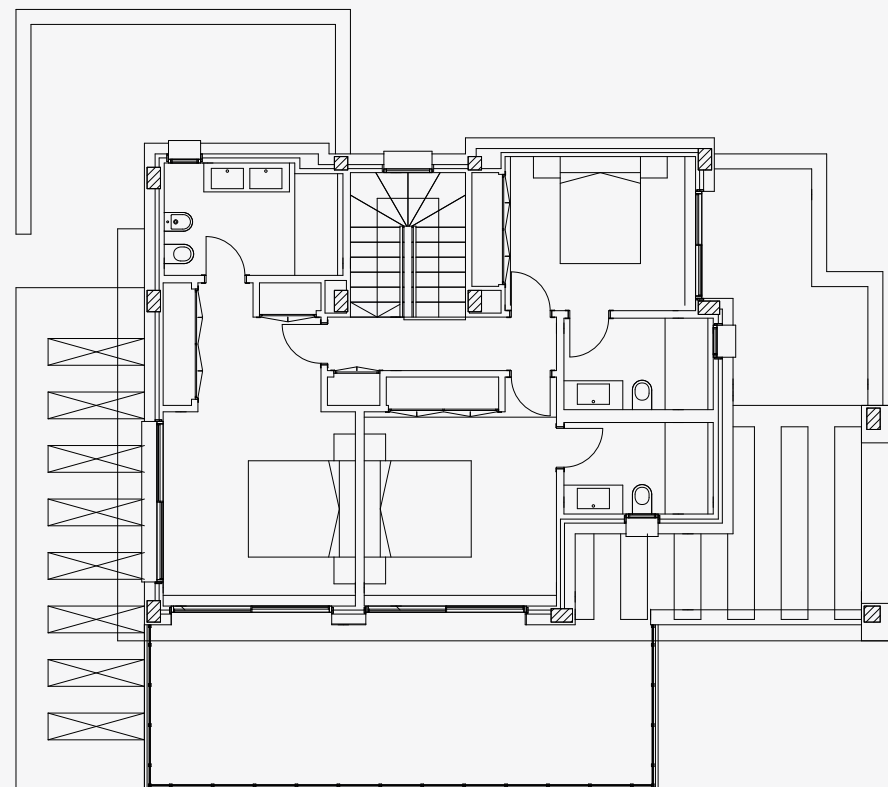
The Azafran villas have an open plan layout and utilize large windows to maximize views and to let as much natural light into the home as possible. Uniquely offering seamless indoor/outdoor living with pocket doors which enables the corner of the living space to open to join the private terrace and pool.

Featuring 4 bedroom suites, all with access to private terraces, these stunning villas sit on generous plots of over 1200m². A double garage is integrated into the generous basement of this unique property which also offers potential for 2 further bedroom suites, secondary lounge/ cinema room and laundry room all with natural light.

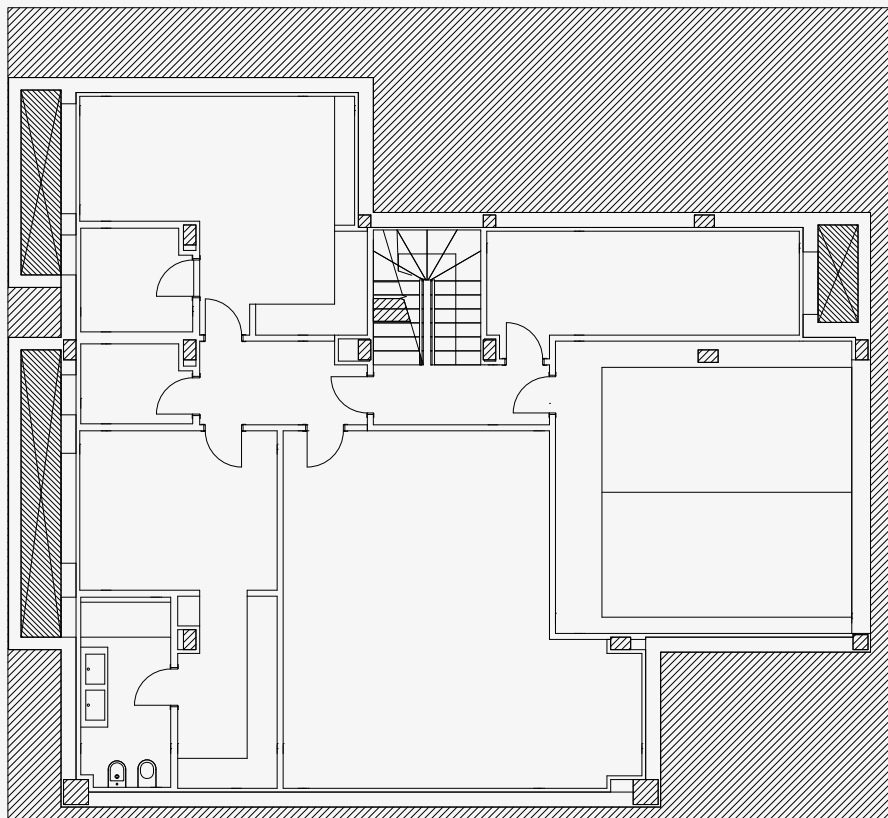




VILLA AZAFRÁN
GROUND FLOOR



VILLA AZAFRÁN
FIRST FLOOR



VILLA AZAFRÁN
BASEMENT





M E N T A - M O D E R N A N D S P A C I O U S

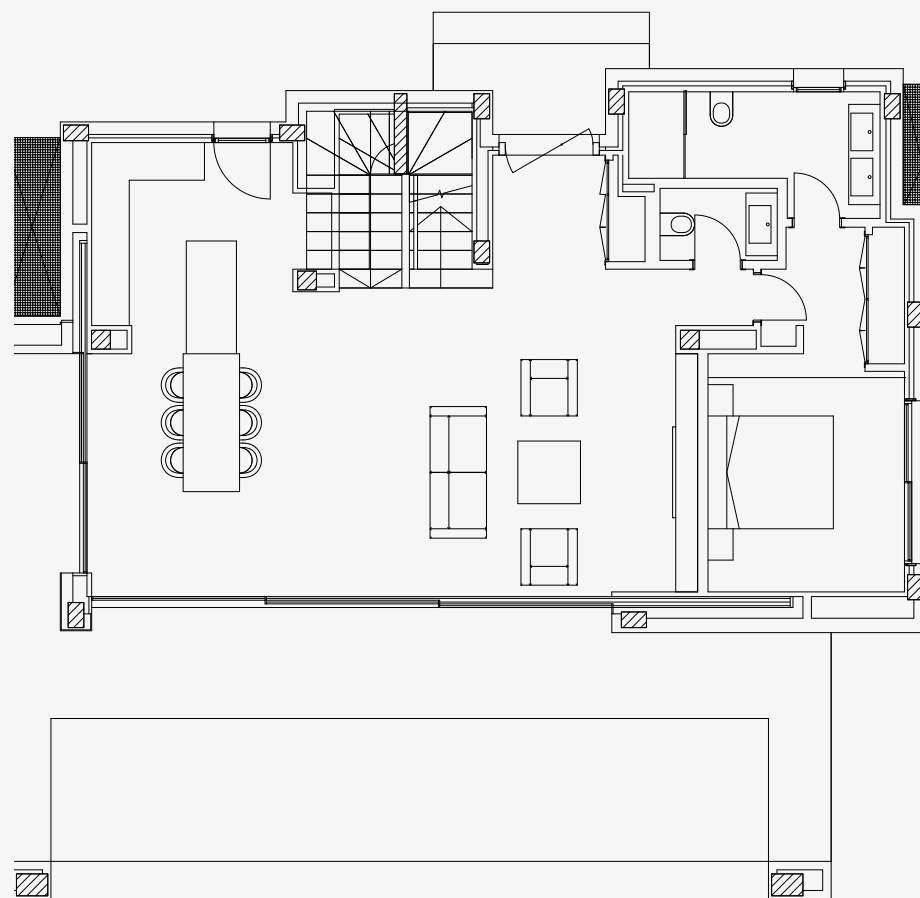


■ VILLA MENTA - 4 BEDROOMS + BASEMENT

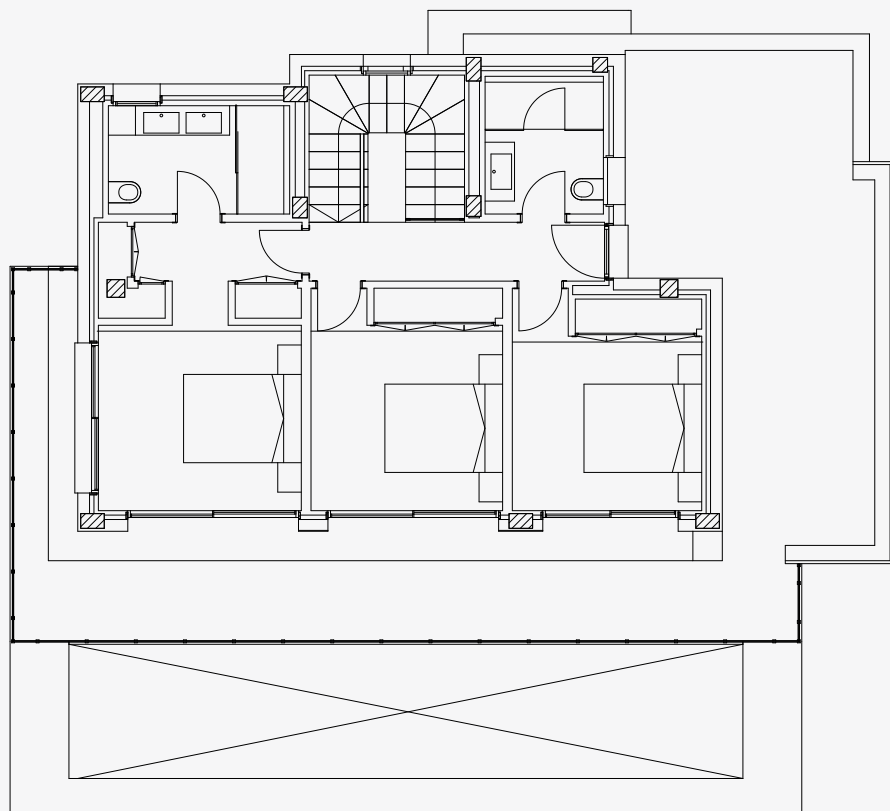
Villa Menta is a property on three levels, featuring a basement, a ground floor, and a first floor. Due to the sloping terrain, the ground floor is almost parallel with the road and offers outdoor parking, with stairs leading straight to the porch on the ground floor.

Access to the interior of the house is available through two entrances: the ground floor porch or the first-floor terrace. The ground floor boasts a spacious open-plan layout, encompassing the living, dining, and kitchen areas, along with a master bedroom complete with an en-suite bathroom and toilet. A staircase from the ground floor grants entry to both the first floor and basement. The first-floor hosts three additional bedrooms and two bathrooms, one of which is en-suite, as well as direct access to the first-floor terrace. The basement offers a versatile open space leaving plenty of options to personalise or transform into 2 extra bedrooms with natural light as well as convenient laundry room and free space for an office, cinema room or gym.

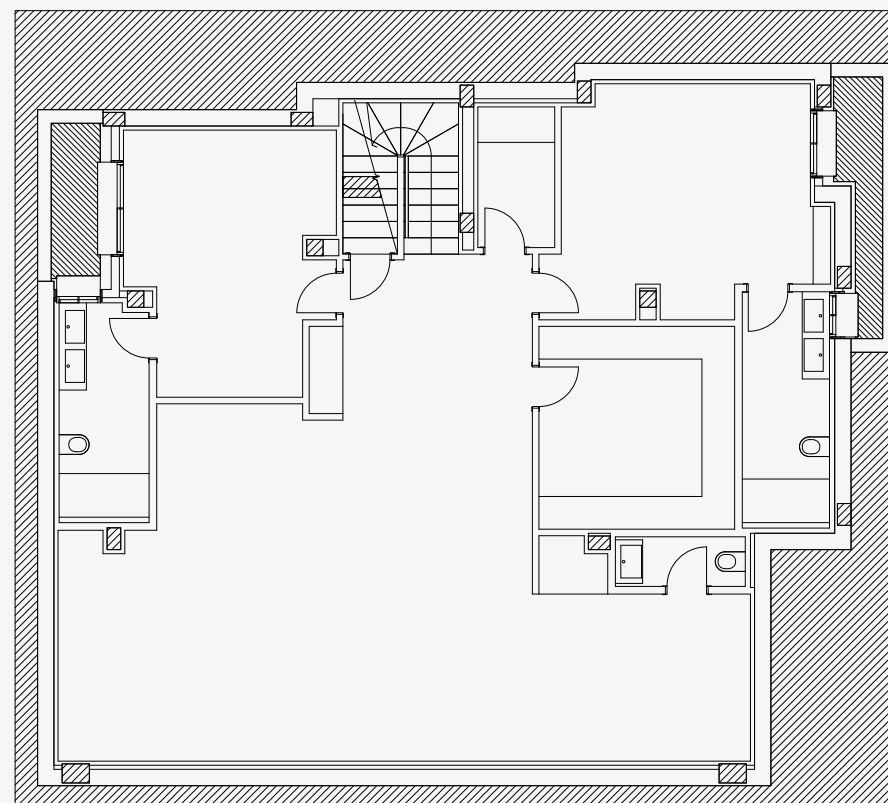
Overall the property comprises of the possibility to have six bedrooms, five bathrooms, and two guest toilet. Its ground floor living area provides direct access to a stunning private garden and swimming pool, as well as a spacious, uncovered terrace.



VILLA MENTA
GROUND FLOOR



VILLA MENTA
FIRST FLOOR



VILLA MENTA
BASEMENT



VILLA LAVANDA C - 4 BEDROOMS + BASEMENT

This typology is distributed over 2 floors: ground floor and basement.

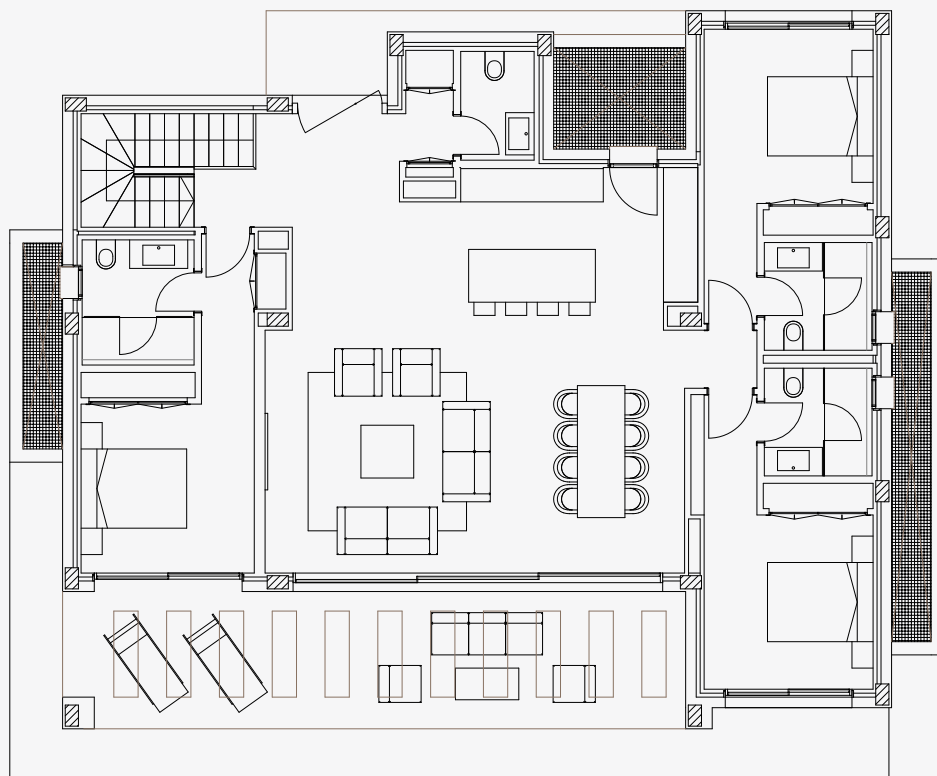
The ground floor of the building is at the level of access from the road or slightly lower. Access to the interior is through a porch. The residential interior is developed on a single floor. The ground floor features a main section where a foyer leads to the living area, including a spacious living room, dining room, kitchen, and a toilet.

Adjacent to this main section is the staircase that connects to the basement and the master

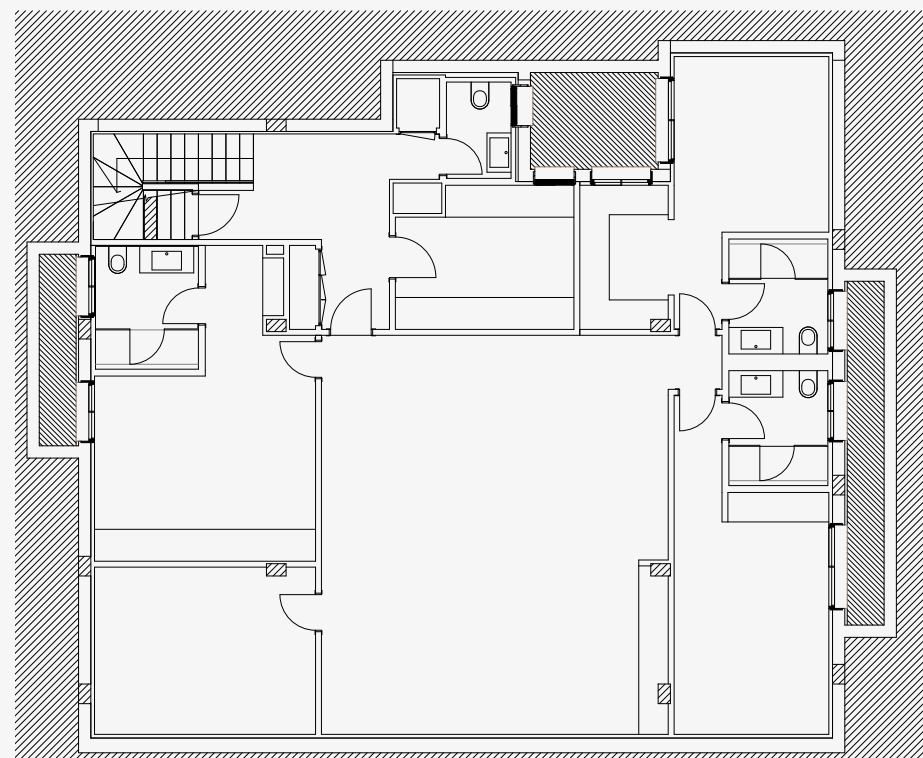
bedroom with an en-suite bathroom. On the other side, there is a small hallway that provides access to 2 bedrooms and 2 additional en-suite bathrooms.

The basement is divided into a laundry room, storage room, toilet, general storage, four secondary storage rooms, and 3 bathrooms.

The exterior of the house includes a standalone swimming pool, spacious pergola-covered and uncovered terrace areas, and a technical cabinet area with access from the kitchen.



VILLA LAVANDA C
GROUND FLOOR



VILLA LAVANDA C
BASEMENT



■ VILLA LAUREL S (A) - 4 BED + BASEMENT

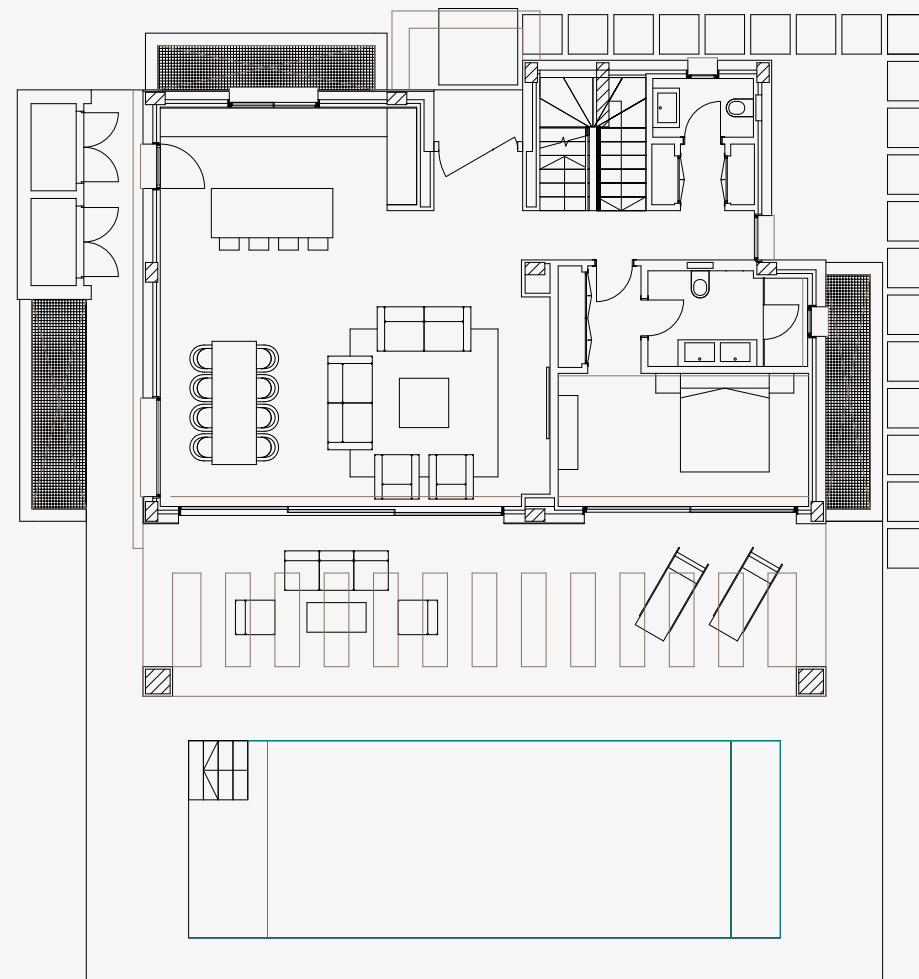
This type of property is distributed over two above-ground floors and one basement floor. The interior is accessed through a porch.

The ground floor features an entrance hall that leads to the daytime area, which includes a spacious living room, dining room, and kitchen. Additionally, there is a small hallway that provides access to the ground floor bedroom, complete with an en-suite bathroom, a guest toilet with a dressing area, and the staircase connecting to the upper floor, which also has a storage area within the stairwell.

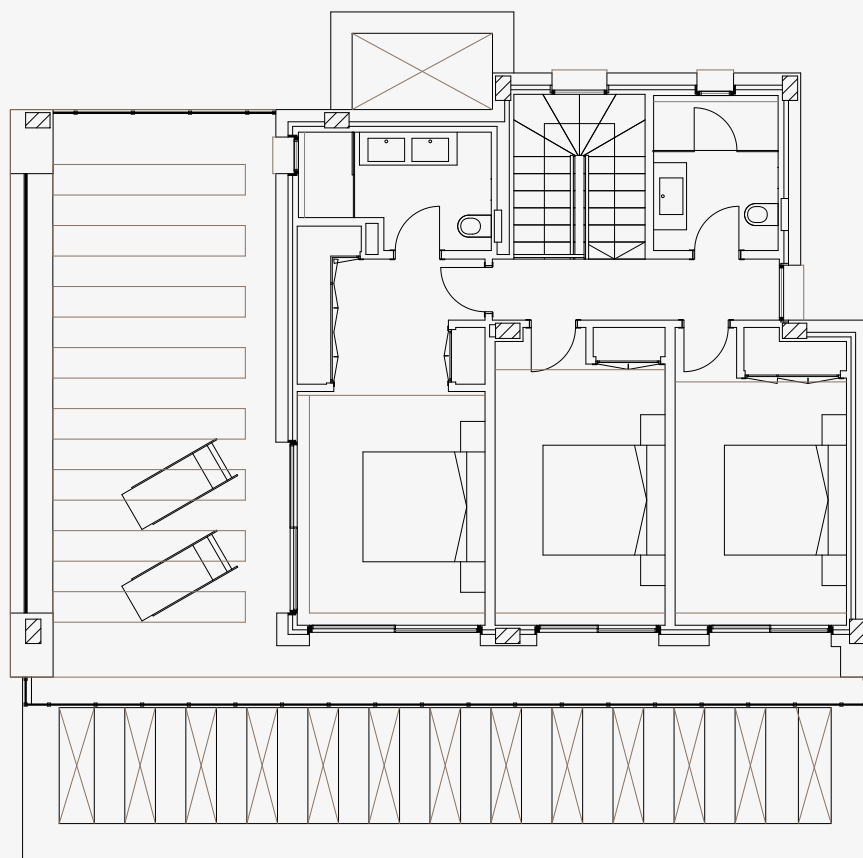
The upper floor comprises three bedrooms and two bathrooms, with the master bedroom having an en-suite bathroom, and the two secondary bedrooms sharing a common bathroom. The upper floor bedrooms have access to a pergola-covered terrace. In total, the house has four bedrooms, three bathrooms, and one guest toilet.

The basement floor features a small hallway that leads to a storage room and a laundry area, as well as two bathrooms, one guest toilet, and three storage rooms.

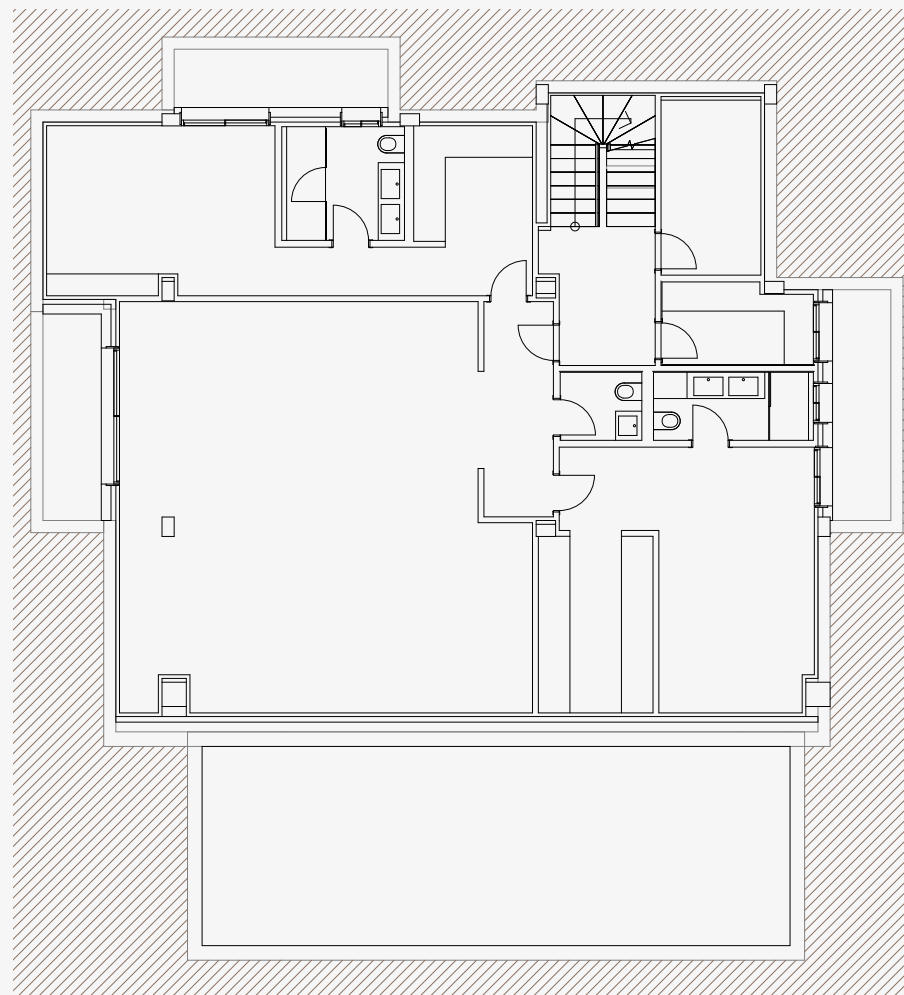
The exterior of the property includes a swimming pool connected to the living area, spacious covered and open terrace areas, and a technical room accessible from the kitchen.



VILLA LAUREL S-A
GROUND FLOOR



VILLA LAUREL S-A
FIRST FLOOR



VILLA LAUREL S-A
BASEMENT

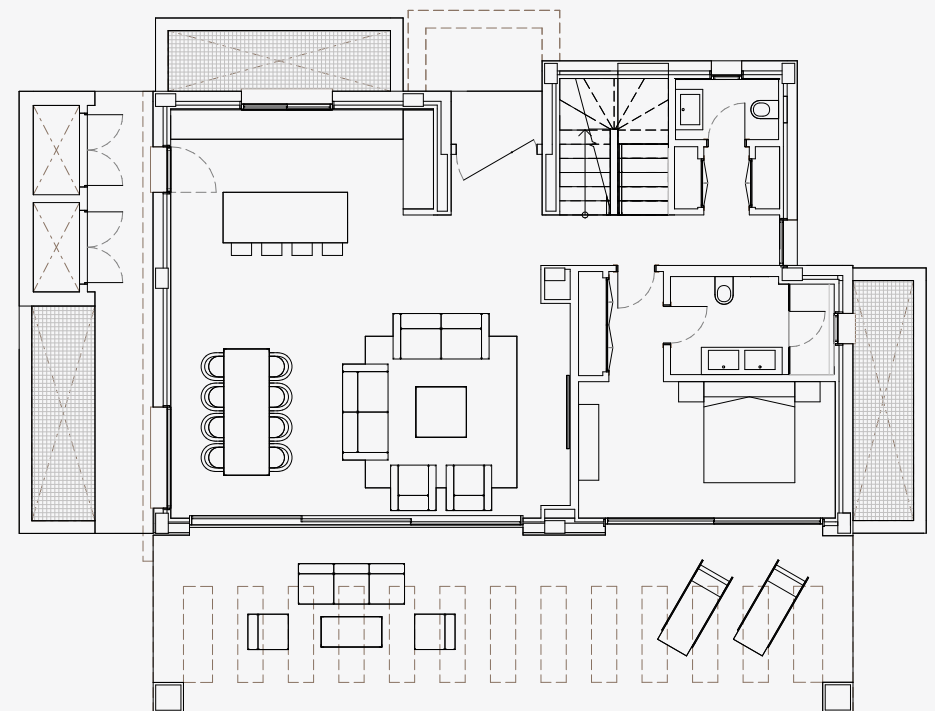


■ VILLA LAUREL S (B) - 4 BED + BASEMENT

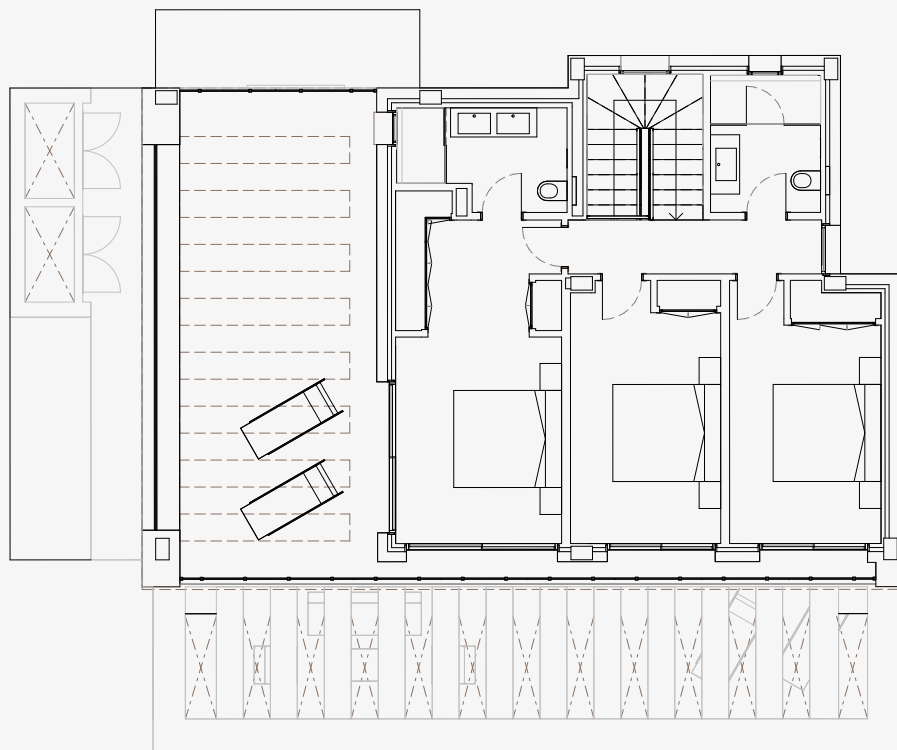
This typology is distributed over two above-ground floors and a basement. Access to the interior is through a porch. The ground floor features a foyer from which you can access the daytime area, including a spacious living room, dining room, and kitchen. Laterally, through a small hallway, you can access the ground floor bedroom with an en-suite bathroom, the toilet with a previous dressing room, and the staircase that connects to the upper floor, which includes a storage area in the stairwell.

The upper floor has three bedrooms and two bathrooms, including a master bedroom with an en-suite bathroom and two secondary bedrooms with a shared bathroom. The upper floor bedrooms have access to a pergola-covered terrace. In total, the house has four bedrooms, three bathrooms, and a toilet.

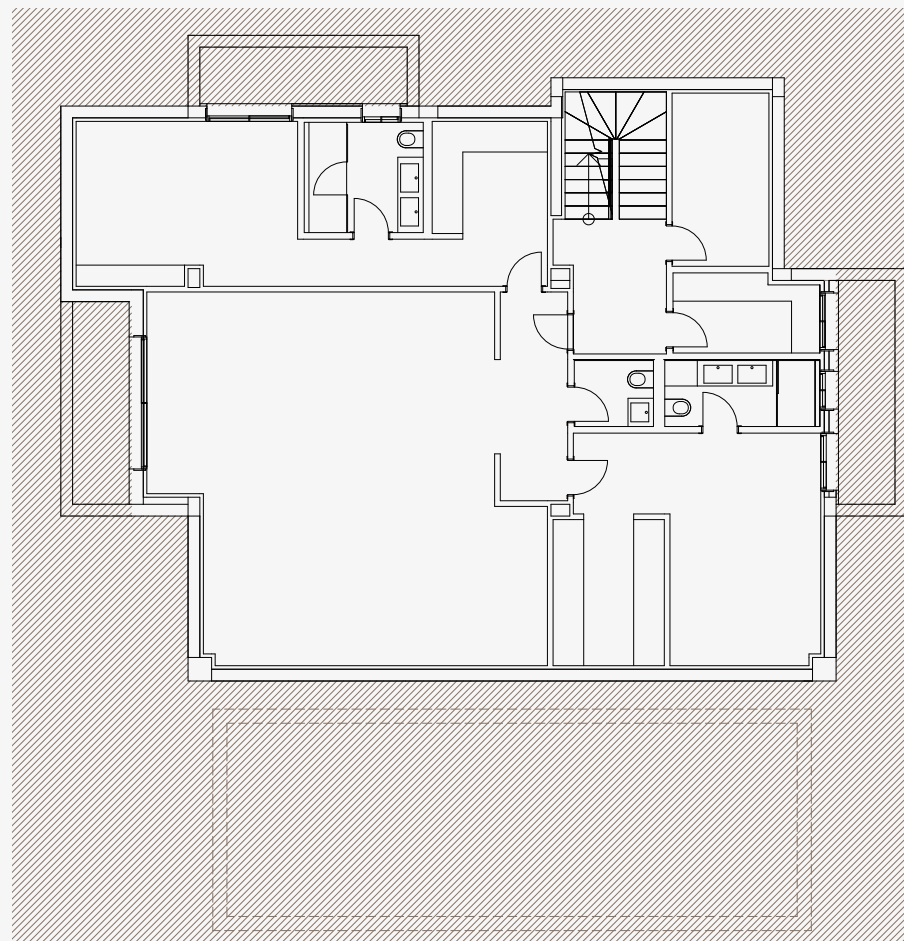
The basement includes a small hallway that provides access to a storage room, a laundry area, as well as 2 bathrooms, 1 toilet, and 3 storage rooms. The exterior of the house includes a standalone swimming pool, spacious pergola-covered and uncovered terrace areas, and a technical cabinet area with access from the kitchen.



VILLA LAUREL S-B
GROUND FLOOR



VILLA LAUREL S-B
FIRST FLOOR



VILLA LAUREL S-B
BASEMENT

■ VILLA TOMILLO S - 4 BEDROOMS

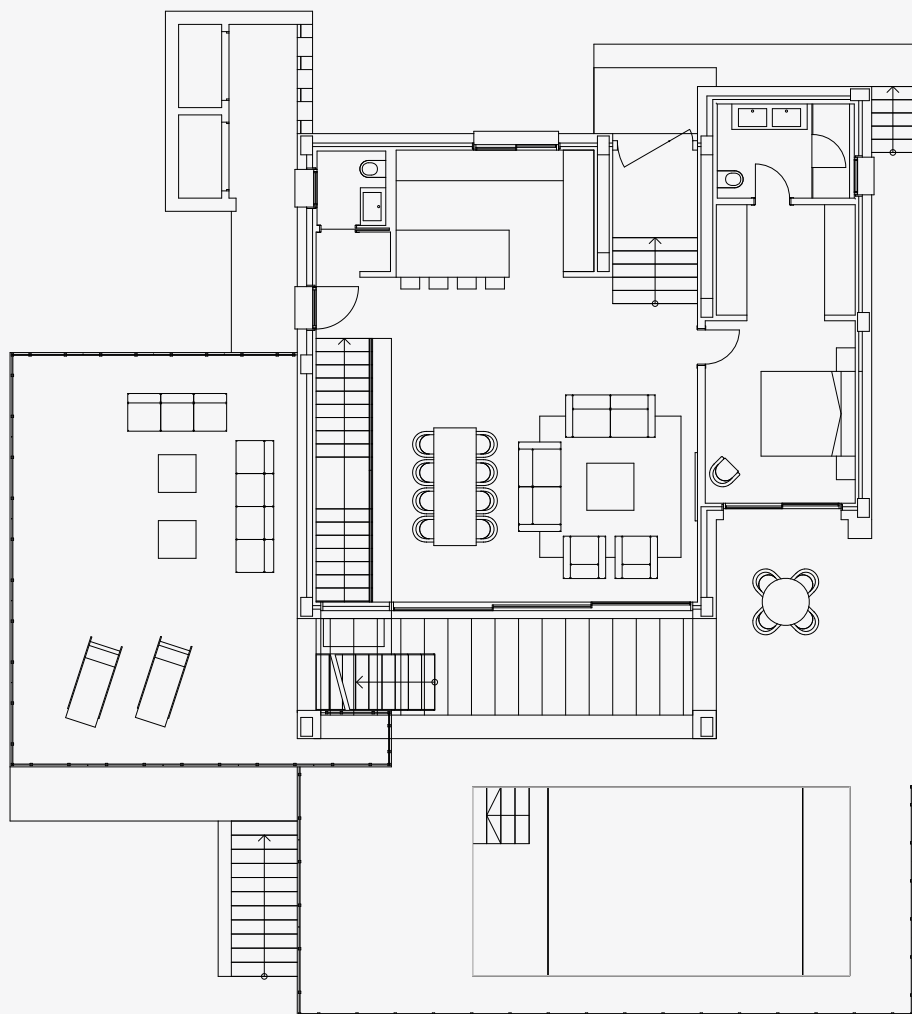
This typology is distributed over 2 floors with a mezzanine floor.

Access to the interior is through a porch. The upper floor is the entry level, and the house is developed in a descending manner. The entry level has a foyer from which you can access the daytime area, including a spacious living room, dining room, kitchen, and a toilet. On one side, you can access the master bedroom with an en-suite bathroom.

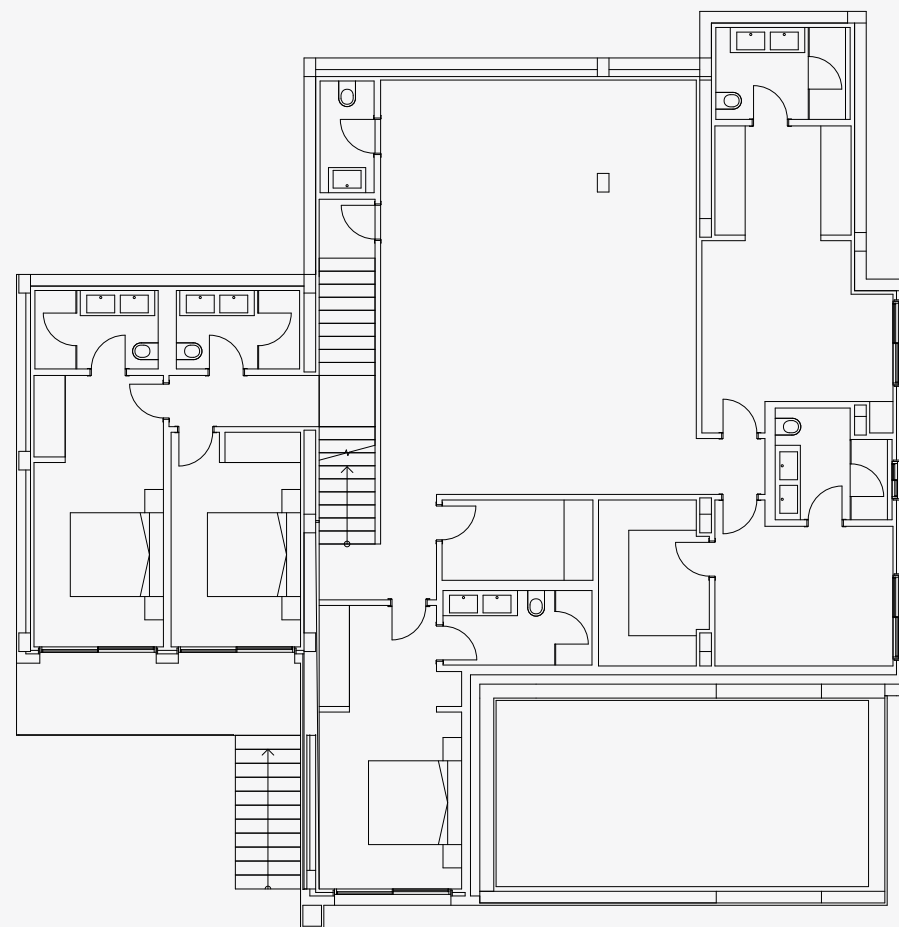
On the other side, there is a wide staircase that descends to the mezzanine floor, where you'll find 2 bedrooms, one of them with an en-suite bathroom, and another common bathroom. In a second section of the staircase, you reach the basement, which includes a bedroom with an en-suite bathroom, a storage room, and a laundry area.

The basement also houses a general storage, 2 secondary storage rooms, 2 bathrooms, and a small toilet. The exterior of the house includes a swimming pool connected to the living area, spacious pergola-covered terrace areas, an elevated uncovered terrace area, and a technical cabinet area with access from the kitchen.





VILLA TOMILLO S
GROUND FLOOR



VILLA TOMILLO S
LOWER GROUND FLOOR

GALLERY

■ TOMILLO S



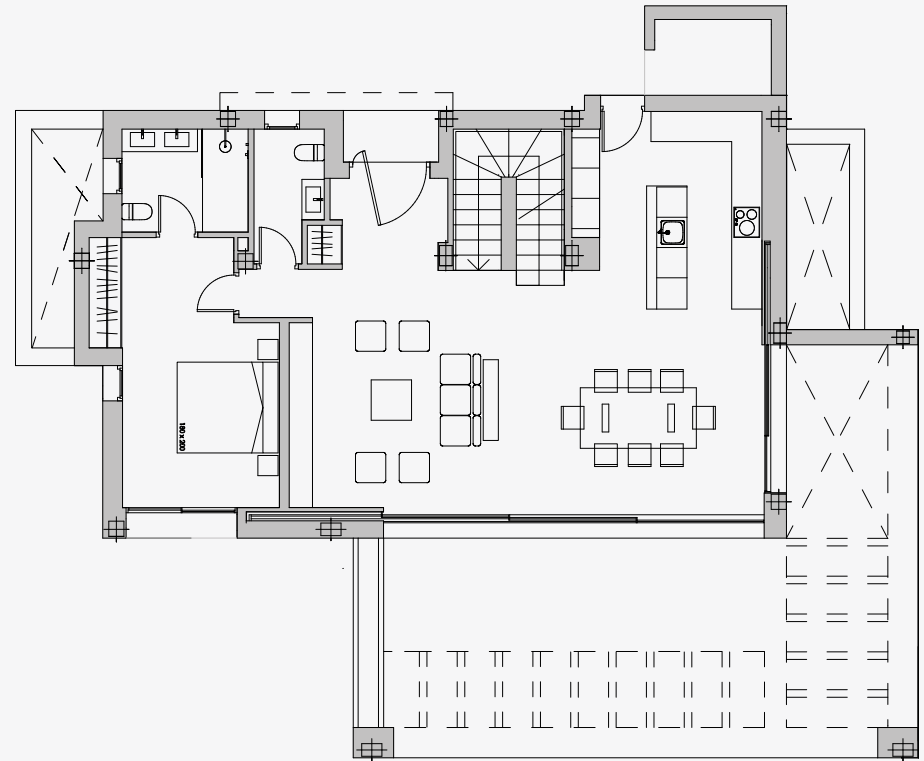


■ VILLA ABETO - 4 BEDROOMS + BASEMENT

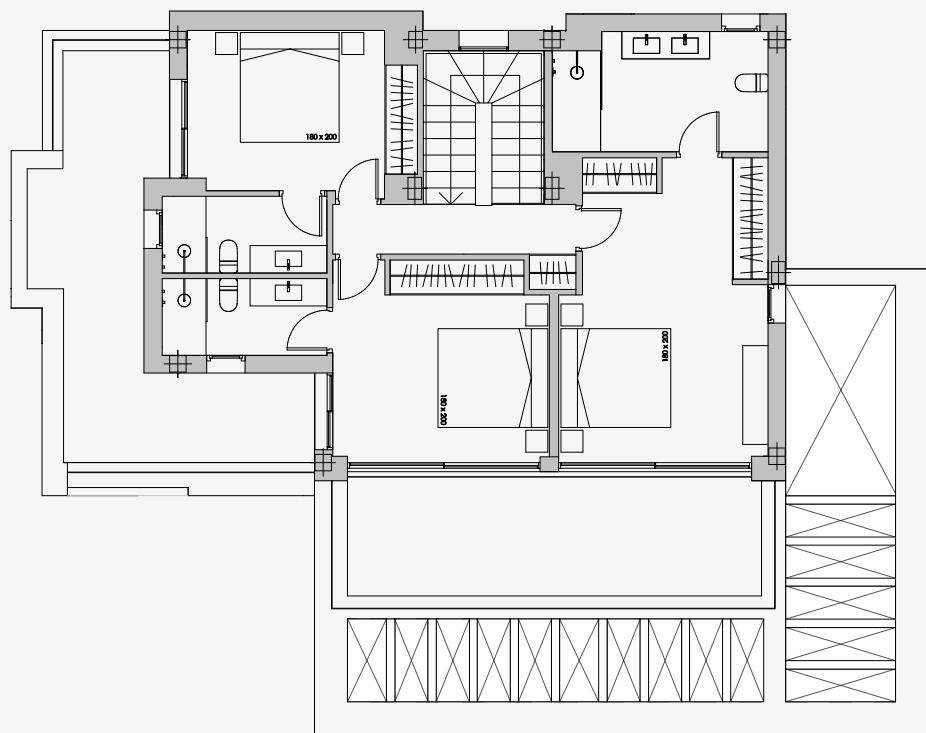
The single-family house has been designed on three floors: ground floor, first floor and basement. At street level there is an open parking area for two vehicles and stairs leading to the ground floor, which lead to the covered entrance to the interior.

The ground floor opens with an entrance hall leading to the day area, with a large living-dining-kitchen area which opens onto the terrace. To the side, a small hallway leads to the ground floor bedroom with en-suite bathroom. This hall also gives access to the toilet. Upstairs there are 3 bedrooms, all with en suite bathrooms and large windows opening onto spacious terraces. In the basement are distributed storage spaces and three bathrooms. In total, the property has 4 bedrooms, 7 bathrooms and 1 toilet.

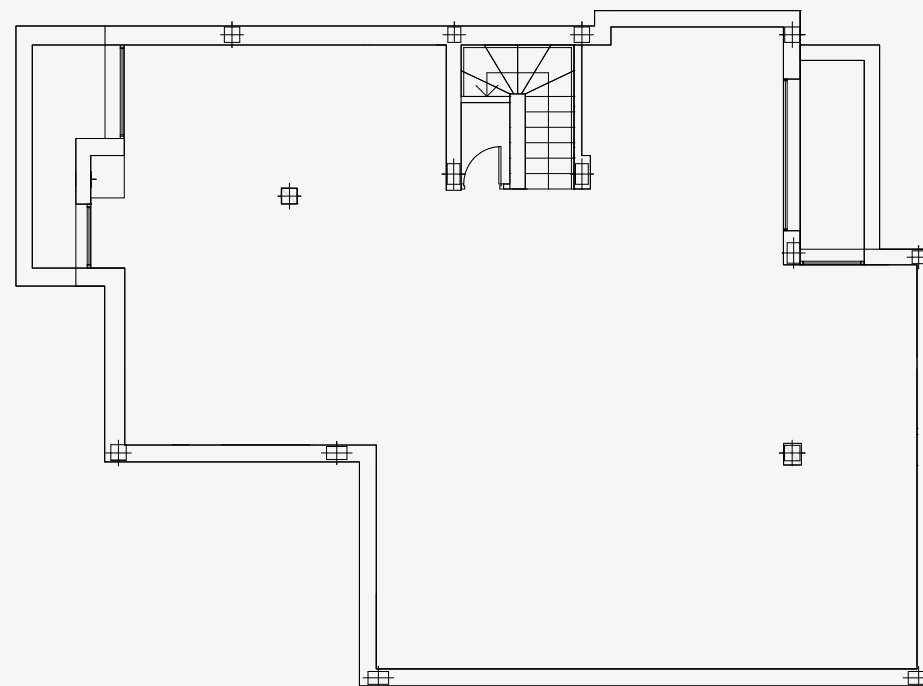
The exterior of the house develops the swimming pool area as a continuation of the main room and distributes around garden areas, large areas of covered and open terraces and a laundry area with access from the kitchen.



VILLA ABETO
GROUND FLOOR



VILLA ABETO
FIRST FLOOR



VILLA ABETO
BASEMENT

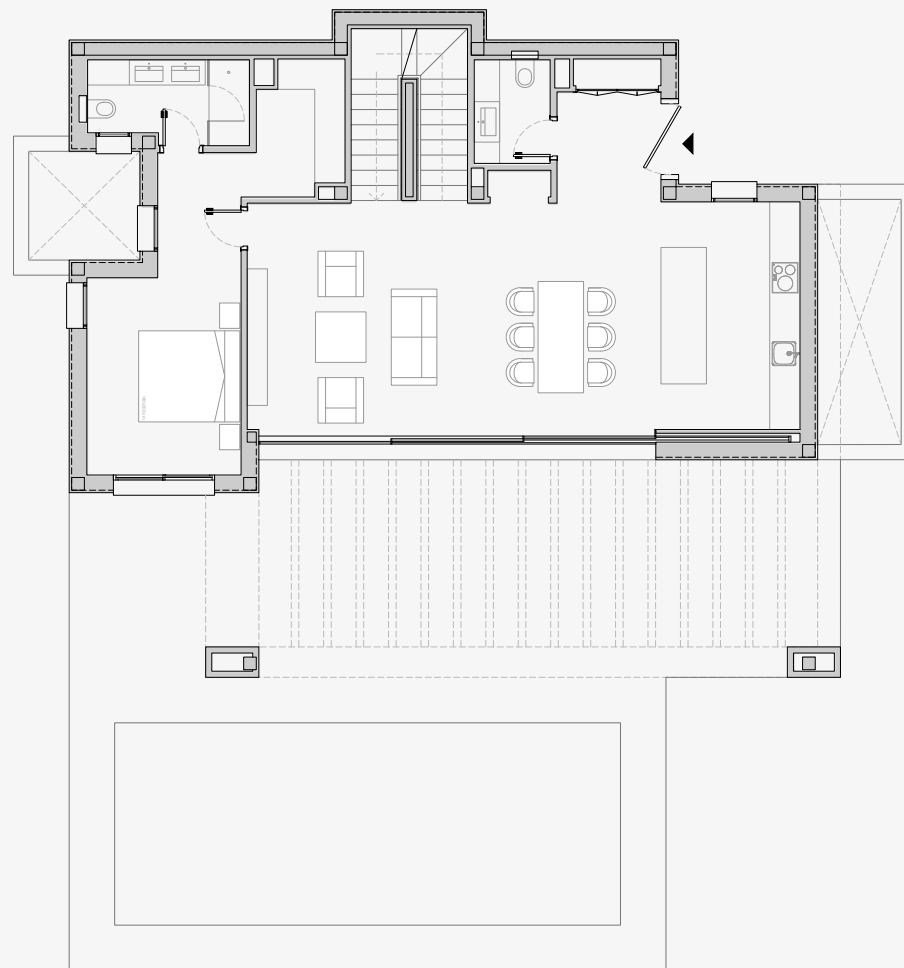


■ VILLA OLIVO - 3 BEDROOMS + BASEMENT

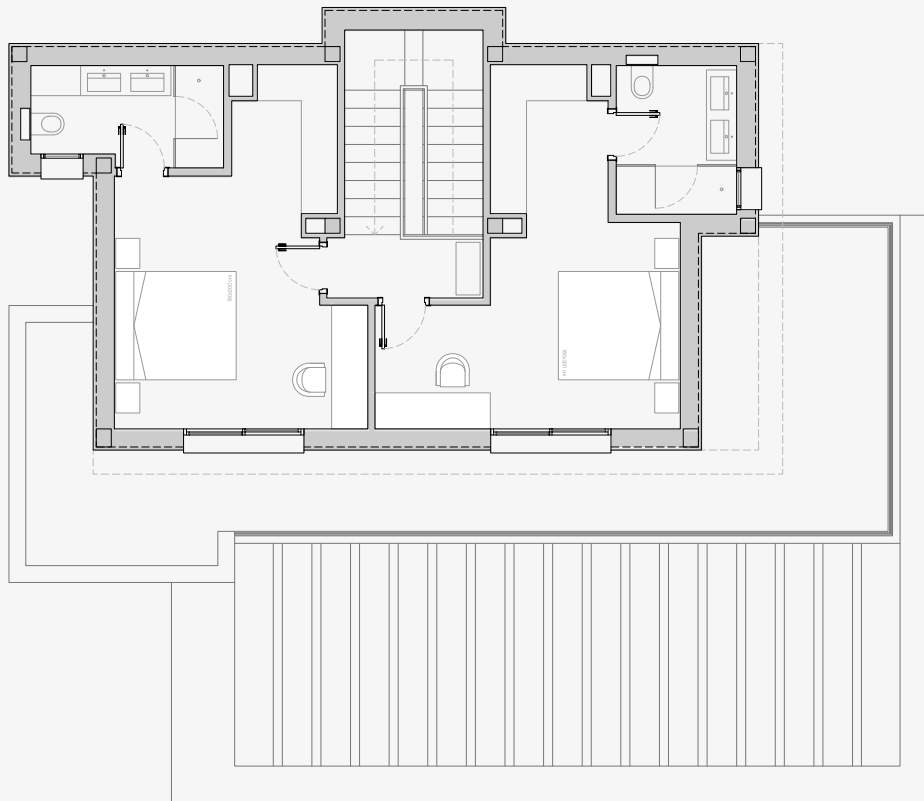
A generous house offering seamless living has been designed on three floors: ground floor, first floor and basement. The ground floor of the building is elevated with respect to the level of access from the road where the closed garage is located, which has access to the basement of the house. From this same level, on the outside, there is a side staircase that leads to the upper garden of the ground floor and the main entrance to the house.

On the ground floor or main floor, access to the interior of the house is through a porch. Inside, the ground floor has an entrance hall leading to the day area, with a large living-dining-kitchen area that opens onto the terrace, where there is a toilet on the entrance hall to serve this floor. To the side is the ground floor bedroom, which has an en-suite bathroom. Upstairs there are two bedrooms with en suite bathrooms with windows opening onto the spacious terraces. In the basement, together with the garage, there are storage spaces, two bathrooms and a toilet. In total, the house has 3 bedrooms, 5 bathrooms and 2 toilets.

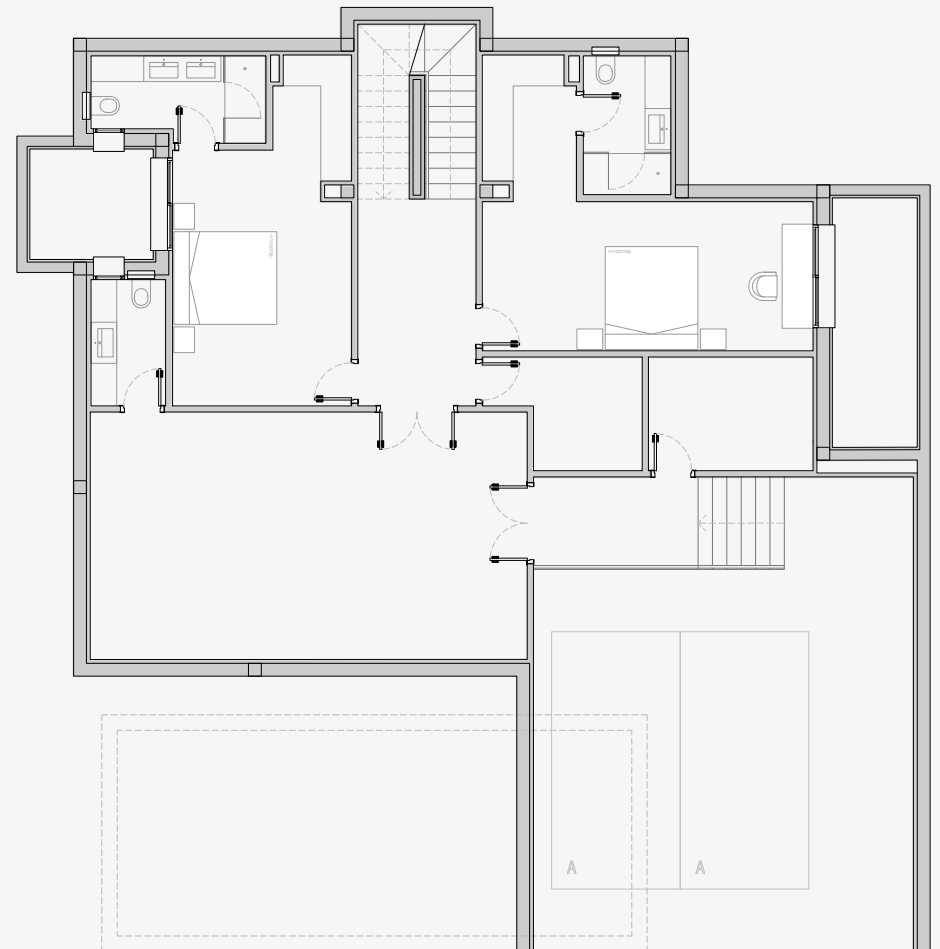
The exterior of the house develops the swimming pool area as a continuation of the main room and distributes around garden areas, large areas of covered and open terraces and a laundry area with access from the kitchen.



VILLA OLIVO
GROUND FLOOR



VILLA OLIVO
FIRST FLOOR



VILLA OLIVO
BASEMENT



QUALITY SPECIFICATIONS

Highlight features include independent underfloor heating by water, floor-to-ceiling glass windows, integrating the inside living area with the terraces or pre-installation of Home Automation System.

Electric gates provide access to the villas, which feature a private 30m2 carport and are set within landscaped gardens with a stunning private swimming pool with Sukabumi colour porcelain tiling.

- ✓ Fully equipped kitchen with Siemens appliances.
- ✓ Ceramic work surfaces.
- ✓ Landscaped Mediterranean themed gardens with private swimming pool.
- ✓ Bticino Living-light series or similar switches and sockets.
- ✓ Fully air-conditioned with hot and cold settings, utilizing Hitachi, Daikin or similar systems with concealed ducting.
- ✓ Underfloor heating throughout by water.
- ✓ Electric underfloor heating in bathrooms.

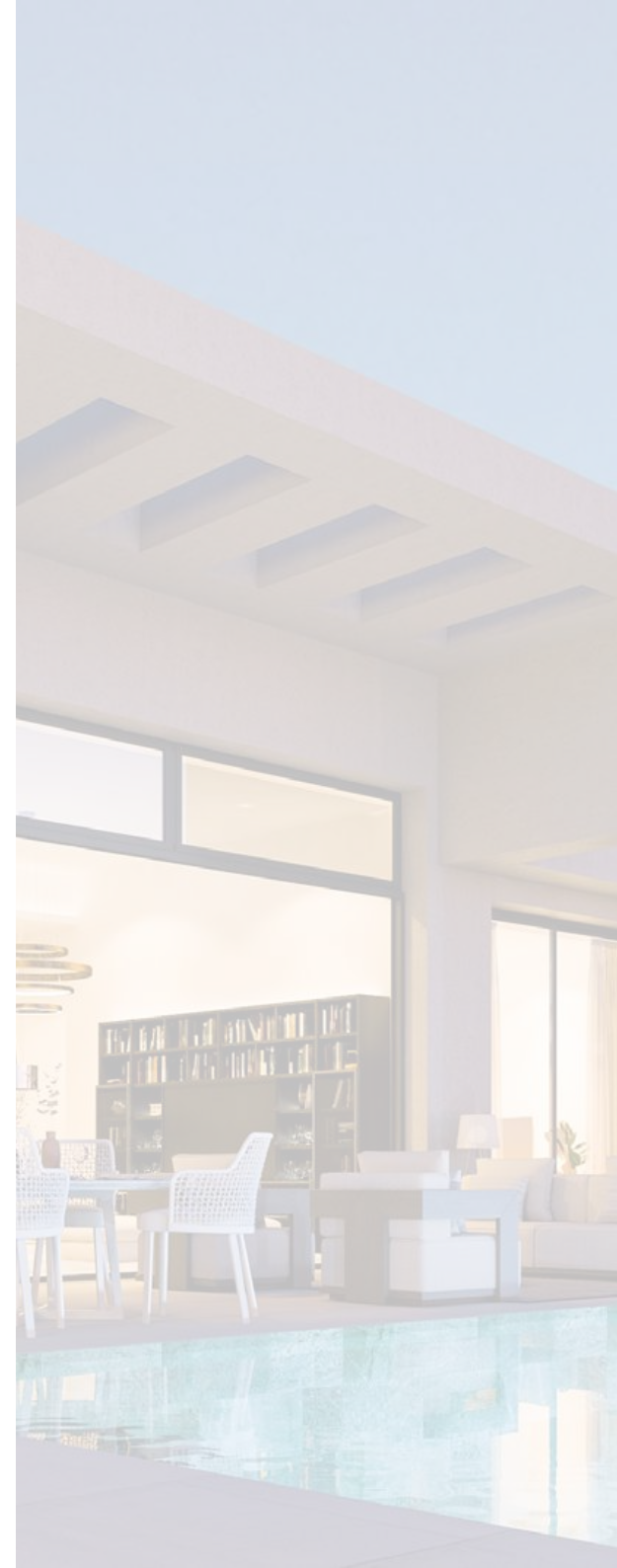


- ✓ Bathroom fittings by Villeroy & Boch and taps by Grohe or other leading brand.
- ✓ Pre-installation of Home Automation System.
- ✓ Bticino video entry system.
- ✓ "Gran formato" (floor to ceiling) ceramic wall tiles in the bathrooms.
- ✓ 90 x 90cm Ceramic porcelain floor tiles.
- ✓ Sliding Cortizo windows with thermal break and security double glazing.



J A S M I N E

DISCLAIMER: This brochure is for marketing purposes only and does not form part of any offer or contract between any of the parties in any way. All the information contained in this brochure is known to be accurate at the time of production but is subject to change without prior notice. Note that images contained herein are based on technical plans and are computer generated artistic renders of these plans. Whilst the greatest care has been taken to ensure accuracy of the information contained in this brochure, the final project specifications and appearance can change. Anyone interested in obtaining up to date information, specifications, imagery or pricing should contact the commercialising entity listed in this brochure.



FINCA
de
J A S M I N E



Scan me